

GARAGE ■ SHED ■ CARPORT BUILDER

www.garageshedcarportbuilder.com

April/May 2024
Vol. 5, Issue 2

**STEEL
TRUSSES**
PROVIDING
STRENGTH &
FLEXIBILITY

**ENHANCING
SHED
SECURITY**

**BUILDING
SHOWCASE**
FAVORITE GARAGES,
SHEDS, & CARPORTS

2024 SHED HAULERS BASH
TURNOUT REVEALS GROWTH OF SHED INDUSTRY



Lasting
partnerships

Leading
services

Tailored
products



Discover more behind one door

**Our leading coatings are equally matched
by service that drives your business.**

Join us and discover the benefits, including
unmatched customer support, innovative tools
and a dedicated team of steel door experts.

Protecting reputations as much as surfaces.
coilcoatings.akzonobel.com/us/steel-door-coating

AkzoNobel

Showcasing Your Work

Iwould like to introduce myself as your new editor. I consider it a privilege and look forward to continuing *Garage, Shed, Carport Builder's* tradition of delivering practical, timely information to help you save time and money and increase profits.

Building Showcase

In this issue, we're highlighting standout projects in our annual Building Showcase article. Builders like to keep up with the latest trends, techniques, ideas, and products. We are pleased to help with that and trust you'll find helpful sources, ideas, and inspiration in

this and future issues. Don't forget that you can find past issues on our website. If you just picked up this issue from a friend and you're not a subscriber yet, we welcome qualified industry professionals to sign up for a free subscription to this or any of our magazines at shieldwallmedia.com/subscribe.

Project Submissions Needed

We're constantly searching for new project submissions to feature. If you haven't submitted one yet, visit garageshedcarportbuilder.com and click on the yellow box on the bottom right that says "Click here to get your project

featured." It's a great way to get the word out about your company. Just upload some high-resolution photos, tell us briefly about the project, and list the key manufacturers and products you used.

Article Topic Submissions Welcome

We want to cover the topics you find most important. Please send me an email with your ideas, suggestions, and feedback to dan@shieldwallmedia.com.



To Your Success!
Dan Brownell, Editor

🏠 NEWS 🏠

Englert, Inc. Partners with Reps of Ohio for Midwestern Expansion

Englert, Inc., a prominent figure in the metal roofing manufacturing industry, has announced a new representation agreement with Reps of Ohio, experts in building materials representation. This strategic partnership marks Englert's commitment to expanding its presence in the Midwest. Reps of Ohio, known for their robust portfolio and deep knowledge of the building materials market, align with Englert's high-quality standards and innovative metal roofing products. Their experience and expertise in local trends and customer needs make them an ideal representative to promote Englert's metal roofing solutions and foster significant growth.

Englert is confident that this collaboration will enhance their market reach and enable them to exceed the current mar-

ket expectations. For more information about Englert, Inc. and their partnership with Reps of Ohio, contact National Roofing Sales Manager Jame Hazen at j.hazen@englertinc.com

US LBM Acquires Northern Michigan's Old Mission Window

US LBM, a leading distributor of specialty building materials in the United States, has acquired Old Mission Windows, located in Traverse City, Michigan.

Founded in 1985, Old Mission Windows distributes windows and doors to residential homebuilders and contractors throughout northern Michigan. With this acquisition, US LBM expands its product offering and reach to support professional builders and remodelers in the northern part of Michigan's lower peninsula, which consists of several growing communities and popular

coastal vacation destinations along Lake Michigan.

US LBM now operates 21 locations in Michigan as part of its Standard Supply and Zeeland Lumber division, which includes Northern Building Supply in Traverse City and Suttons Bay.

US LBM is the largest privately owned, full-line distributor of specialty building materials in the United States. Offering a comprehensive portfolio of specialty products, including windows, doors, millwork, wallboard, roofing, siding, engineered components, and cabinetry, US LBM combines the scale and operational advantages of a national platform with a local go-to-market strategy through its national network of locations across the country.

For more information, visit uslbn.com or follow US LBM on LinkedIn. Contact Timothy Wirth Vice President of Communications at Tim.Wirth@uslbn.com.



CONTENTS

Features:

6 Enhancing Shed Security

9 2024 Shed Haulers
Bash: A Great Success

Large Turnout Reflects the Growth of
the Shed Industry

44 Business Profile:
Apple Outdoor Supply

46 Steel Trusses

Reinventing Mid-Sized Constructions
with Strength and Flexibility



10 Some of Our Favorite
Garages, Sheds, and
Carports of the Past Year



Departments:

- 3** Editor's Note
- 3** Industry News
- 41** Business Connections
- 51** Construction Survey Insights



On The Cover:

Custom garage by Pole Barns Direct. See page 36.

COURTESY OF POLE BARNS DIRECT.

ADVERTISING INDEX

Company	Page #
Acu-Form	42
AkzoNobel	IFC
Anthem Built.....	41
ASC Machine Tools Inc.....	42
ASTA America by Janus International....	BC
Aztec Washer Company.....	42
Direct Metals Inc.....	41
Everlast Roofing, Inc.	42
Golden Rule Fasteners.....	42
Grabber Post Buildings, Inc.....	33
Kevmar Manufacturing.....	41
Marion Manufacturing.....	41
Perma-Column LLC.....	42
Planet Saver Industries / GreenPost	42
Red Dot Products, LLC	41
RetroFitClip.....	43
rFOIL Reflective Insulation	42
RTO National.....	11, 17
Shed Marketer	13
Shed Windows and More	7
Snow Stoppers LLC.....	41
SteelGrip SAMM, Inc.....	41
Trac-Rite Door	19
United Steel Supply.....	41

YOUR PRIVACY IS IMPORTANT TO US

Unrelated third parties often attempt to sell mailing lists for what they say are our publications. You can be assured that WE DO NOT, HAVE NOT, AND WILL NOT EVER SELL OUR SUBSCRIBER LISTS. We will also NOT sell the attendee or exhibitor lists from our shows. We do provide attendee lists to the exhibitors free of charge and as a courtesy for their support, but we NEVER provide this or any other information to independent vendors.

Gary Reichert,
Publisher, Shield Wall Media



Managing Editor

Dan Brownell
 dan@shieldwallmedia.com

Editorial Staff

Karen Knapstein,
 Linda Schmid

Circulation/Subscriptions

Barb Prill
 barb@shieldwallmedia.com
 920-471-4846

Publisher/CEO

Gary Reichert
 gary@shieldwallmedia.com
 715-252-6360

Director of Events

Missy Beyer
 missy@shieldwallmedia.com
 920-216-3007

Executive/Advertising Assistant

Kathy Budsberg
 kathy@shieldwallmedia.com

Advertising/Show Assistant

Cari Ullom
 cari@shieldwallmedia.com

Graphic Designers

Tom Nelsen, Kevin Ulrich

Garage, Shed & Carport Builder (ISSN: 2834-085X) (Vol. 5, No. 2) is published six times per year (March, May, July, September, November and December) by Shield Wall Media LLC, 150 Depot St., Iola, WI 54945. Periodical postage paid at Iola, WI, and at additional mailing offices. Canadian Agreement Number: 40665675. POSTMASTER: Send address changes to Garage, Shed & Carport Builder, Barb Prill, PO BOX 255, Iola, WI 54945. Copyright 2024 Shield Wall Media LLC. Names and logos referred to or displayed in editorial or advertising content may be trademarked or copyrighted. Garage, Shed & Carport Builder assumes no responsibility for unsolicited materials sent to it. Publisher and advertisers are not liable for typographical errors that may appear in prices or descriptions in advertisements. Mailed free to rural contractors and their suppliers throughout North America.

GO TO PAGE **15** TO SUBSCRIBE TO MORE **FREE** MAGAZINES



Enhancing Shed Security

BY DAN BROWNELL

Crime is an ever-present reality in our world, and sheds experience their share of break-ins and vandalism. Devices such as security lighting, security cameras, and alarms can be used to help reduce crime, but shed security can also be improved through the choice of doors, windows, and hardware, explained Thomas Slack, co-owner of Shed Windows and More, in Longs, South Carolina.

Slack's wife, Theresa, started the company in 2001 when she noted that many DIYers were looking for shed components. Slack joined his wife full-time in 2008 and built their website shedwindowsandmore.com to reach a wider audience. Now the company services DIYers, builders, and contractors around the world. With more than 15 years of experience in the industry, Slack has developed a keen insight into shed security and frequently speaks on the topic.

"There are many questions you need to think about when you consider the security of a shed," he said. "How do you know what type of screws do you use? What type of door hardware do you use? How do you do the hinges? What hinge system do you use? What kind of windows do you use?"

The choices are important because the typical stock hardware on a shed may not be strong enough to stop a thief who is willing to work a little to break in. "Probably 98% of people use the standard T handle on their shed," Slack said. "That T-handle is everyone's main line of defense. But if I take a hammer and I smack that T handle once or twice, guess what? I'm gonna pop that soft metal cylinder lock and have access to your shed.

The handle can be upgraded to a sturdier one, but there is a limit to the sturdiness of cylinder locks. "You can take the lock a step further," Slack said. "We have a three-point locking system that has a header bolt, a bottom plate bolt, and a center bolt that



The corrugated roll-up door is one of the most secure door systems for a shed.

goes across. And that's the one that we use and for people who want to add a little more security, but it still uses a T handle. The problem is that while the owner might think, Cool! I have three points of security on my door, in reality, if someone tries to pull or pry on it, a cylinder lock is a cylinder lock. If you put enough leverage on it, it's going to pop." So the locks do have limitations.

Protecting the Screws That Hold the Hinges

"The typical building supply company right now uses square-head screws because Phillips-head screws became very popular," Slack said. "Everybody has a Phillips head screwdriver, so it's not hard to get a Phillips screwdriver and pop out a couple of screws off a hinge and just take someone's door off and have access to



A three-point latch kit system can add more security.



Customizable Double Pane

Florida Approved Windows

Customizable Features!

- Black / Clay / White Color
- Standard or Tempered Glass
- With or Without Grids
- Vertical / Horizontal / Fixed Window Designs
- Dynamic Pressure Rating
- Argon Gas Filled
- And Much More!



Available Hinges!



Now Available!

Single Pane Windows - Roll Up Doors - Pre-hung Doors



their storage shed. So, everyone went to that square bit because it's safer, it's more protective. But now square bits are becoming more and more popular. They're in every single shed kit.

"One of the things we're looking at this year in our business is going to a special star bit that's not standard. It's a metric-style star bit, so it's not in every single kit. So when we provide you screws and hardware, we'll provide you that bit. And that will be a security option to provide an extra level of security."

The Weakest Link

The weakest part of any chain is the weakest link. The same principle holds true with sheds. "The weakest point of any building is the door," Thomas said. "The door is the entry point, and the entry point is always the weakest, which is why I put so much focus on doors. So how do you improve the entry system of your building? There's a couple of different ways you can do that. You change your door. You can go away from a wood door, or you can change the hardware on the wood door."

"The most vulnerable spots on a wood door are the hinges and door handle. Most hinges are face-mount on a wood door," he said. "A few people use a continuous hinge, or a butt hinge, which are going to be more secure. For instance, we have a 72" continuous hinge. That's what we call our piano hinge, or a continuous hinge, and that 72" hinge goes pretty much the whole length of the door on a standard shed wood door, which covers and hides the screws. The hinge pin is locked in so you can't pop the pin. You can't undo the screws. So a way to secure your buildings is by going with a hinge that can't be tampered with and can't be taken off while the door is closed."

Closing the Window of Opportunity for Theft

"As long as you build walls correctly, someone's not going to be able to ram it with their shoulder to break through a wall or knock it down. So the only other way people can get in is through windows and doors," Slack said. "A lot of people who are trying to secure their buildings just don't use windows at all. The only entry point then is the door. Then you go with the most secure door system. You go with the corrugated roll-up door."

Paul Holbrook, of Duvall's Portable Buildings (duvallsaffordableportablebuilding.com) in Clarksville, Arkansas, said his company's standard doors are the 3' double barn doors, which creates a 6'-wide opening to make easy access for storing large items like riding mowers, ATVs, motorcycles, etc. But customers who want more security, such as for a home office shed, can upgrade to a heavier-duty house door with a nine-lite window. Owners can then purchase whatever level door lock they would like from their local hardware store, such as a deadbolt lock. In addition, Duvall's offers an upgrade to a double-pane insulated house window, which is sturdier



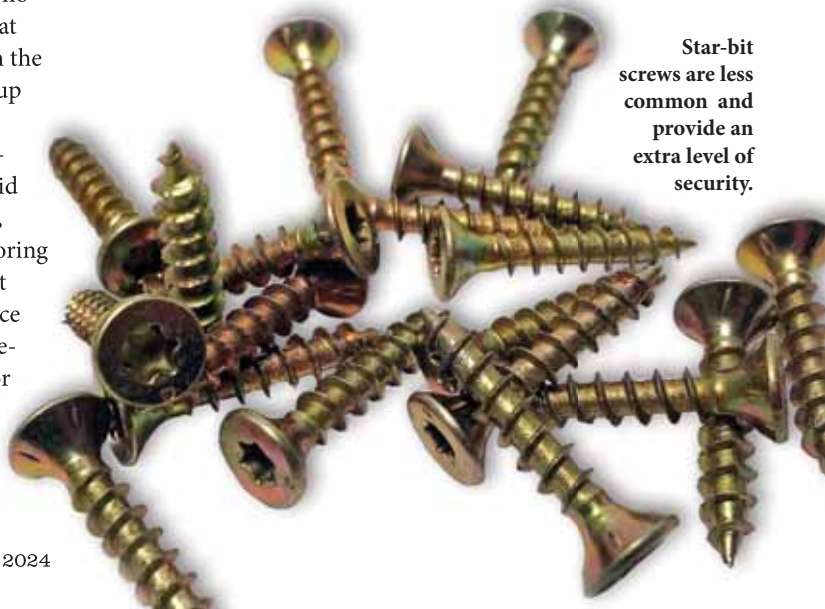
A continuous hinge is much harder to remove than standard hinges.

than its standard single-pane storage shed window.

Slack pointed out that while one option for increasing window security would be to install small windows — small enough to prevent someone from entering through them — that creates a design that's not very visually appealing. A lot of people won't go with tiny windows because they would rather go with no real window at all and put in a faux window instead.

"Normally in a situation like that, what I suggest is to build a casement system and put fake windows in," Slack said. That provides the visual of windows although they're not actual functional windows for light or ventilation, but they are secure because people can't use them to enter. "If you want windows for light, you put transoms on your eaves so people can't reach them," he said.

By implementing some or all of these suggestions, shed owners can rest easier, knowing that their shed has improved security. **GSCB**



Star-bit screws are less common and provide an extra level of security.

2024 Shed Haulers Bash a Great Success

Large Turnout Reflects the Growth of the Shed Industry

BY SAM BYLER

The 2024 Shed Haulers Bash is a wrap. North Carolina proved to be a great place to host a Bash and was a huge success. But it all started with our great sponsors. They stepped up big and not only paid the bills but showed up and showed out! Much thanks to all of them, the list was long!!

The haulers came from near and far and more than 800 people made their way through. The bigger number was the amount of rigs that showed up. With 147 registered rigs, and dozens more in the parking lot, it was by far the best showing of rigs yet. Semis and pickups were equally well represented, even though the rise in semi rigs is steadily growing. As sheds get bigger, inventory goes further, we see the growth in rigs being used. The shed industry is constantly growing.

All the competitions were great this year! We added some new ones to see how they would do, and they went well. Everyone enjoyed competing and watching. The food, as always, was spectacular. Thanks to all who came and helped. And of course, there had to be a parade. It was great!

It was also good to see the number of people who showed up just to support the haulers. There were as many of those there as were haulers. The sponsors were great, helping with everything, even the judging. It was great to see all the comradery between everyone. For two days, everyone laid their differences aside and just hung out, competed, ate food, and had fun together. Imagine if we all did



that all the time.

This is the greatest Industry in the world. Let's continue to grow it, and nurture it. Competition is great. Collaboration is even better. We can all help each other!

Interesting to note, seems like every time we have a Bash, it gets sandwiched between rainy weather. This year was no

different. Wednesday and Saturday were complete washouts. Thursday and Friday were great. Current plans are to have our next event in the great state of Texas in October 2025. Everything is bigger in Texas. Maybe even the Bash! Start planning now! For more information about the Bash, visit <https://shedhaulersbash.com>. **GSCB**

Carport

TRUE METAL SUPPLY

TRUOMETALSUPPLY.COM

SPECS:

SIZE: 21'8"x24'

METAL: True Metal Supply, Signature Burnished Slate Tuff-Rib

COATINGS: WeatherXL Sherwin Williams Coil Coatings

STEEL GABLE & BAR-JOIST TRUSSES:
Buffalo River Truss

POSTS: Old South Wood Preserving, 8'x8' treated post columns

FASTENERS:
Atlas Bolt & Screw:
WoodUltimate Fasteners
Triangle Fastener:
Sturdi-Wall Drill-Set Anchors



This homeowner came to True Metal Supply for a new carport, and they connected the homeowner to Devil Dog Roofing for installation. The simple carport is 21'8"x24' and uses drill-set metal anchors, as well as a Tuff-Rib metal roof. With strong steel trusses, this hybrid post-frame carport will stand the test of time.



RTO NATIONAL
success made simple

Helping shed businesses **SUCCEED**

20 years in the shed industry has given us the insights, tools, and team to help your business be successful in 2024.

Find out how RTO National can make success simple!

BECOME AN RTO NATIONAL DEALER PARTNER

(833) 628-8536 | contactus@rtonational.com



Office Shed

THE SHED CENTER

[HTTPS://THESHEDCENTER.COM](https://theshedcenter.com)

SPECS:

ROOF METAL: ProTech Steel

TRUSSES: The Shed Center

SIDING: LP SmartSide,
with LP SmartSide trim

WINDOWS: Coeur D Alene Window

ALUMINUM SIGN: Signs.com



The Shed Center builds all the standard shed styles and specializes in custom builds as much as possible. A few years ago, manager Joe Gish decided to build a few small caboose sheds. Although many customers liked the looks, only a few sold. In essence, they were a successful failure, so last year, he drew up plans for a more actual size caboose to finish

out as an office and transport it around to home shows, fairs, and events as an attraction. They call it "Cubby" and it is 10'x30'. The bar/desk was made to simulate a locomotive. The interior walls are cedar slats (368) attached to painted plywood. In the corner of the living room is a Vermont Castings "Aspen" wood stove and Tenedos "California Gold" wall stone. It's fun to see the kids drag their parents into the caboose when the parents would probably have never given a shed display a second look.





WE WROTE THE BOOK

ON SELLING SHEDS ONLINE

- ✓ Over 180 pages of actionable information!
- ✓ Covers all aspects of digital marketing for sheds
- ✓ Based on real world examples & case studies

Get your FREE* Copy Today!
at Sellingshedsbook.com

*Just pay \$4.95 to cover shipping & handling

SELL MORE SHEDS!

PROGRAMS FOR SHED MANUFACTURERS & SHED DEALERS

- ✓ **DOMINATE THE SEARCH RESULTS**
- ✓ **GET A TON OF QUOTE REQUESTS**
- ✓ **COLLECT STELLAR REVIEWS**
- ✓ **FOLLOW UP WITH PROSPECTS & SO MUCH MORE!**



SHEDMARKETER.COM **(888) 346-1069**

Gothic Arch Greenhouse

FROMTREE2YOU

SPECS:

SIZES: 8'x12' and 8'x20'

SIDING OPTIONS: Dutch cove, board and batten, cedar shakes

STAIN: Semi-transparent or solid color with customer's choice of trim color

PLASTIC: Nanolux

HINGES/HARDWARE: Apple Outdoor Supply, purchased from a local business

SHAKES: Sourced locally from an old farmer's shingle shop in Brasher Falls, New York.

LUMBER: The owner has a cable skidder and Wood-Mizer sawmill, so he sources all lumber himself from a local woodlot.



Our Gothic arch greenhouses were originally built as a low-overhead item to allow us to keep building through the winter. Frames could be made without plastic and stored outside. After a conversation with a shed retailer in Vermont, we changed some things, and it really improved the look of the buildings. This combination of aesthetics and function helped us to quickly gain traction, selling more and more every year. I currently work with wholesalers along the East Coast and am always looking to expand sales.

SUBSCRIBE NOW!



Shield Wall Media brands are dedicated to serving the information needs of construction professionals.



SUBSCRIBE ONLINE: shieldwallmedia.com/subscribe or fill out & mail form below.

FRAMEBUILDING NEWS

METAL ROOFING MAGAZINE

Rural Builder

Rollforming Magazine

GARAGE, SHED & CARPORT BUILDER

ROOFING ELEMENTS

Metal Builder

FREE 3-YEAR SUBSCRIPTIONS!

1. Please check one or more boxes, sign & date:

I wish to receive: Metal Roofing Garage, Shed & Carport Builder Metal Builder
 Rural Builder Frame Building News Rollforming Roofing Elements

Signature (REQUIRED): _____ Date: _____

Print Name: _____

Company: _____

Address: _____

City/State/Zip: _____

Phone or Email (REQUIRED): _____

Check this box if you wish to receive the email newsletter associated with the magazine subscription(s) above.

2. Choose which title applies:

- President/Vice President
- Principle/Shareholder
- Sales Manager or Rep
- Foreman/Crew Manager
- Engineer/Architect
- Other: _____

3. Describe your business:

- Builder/Contractor
- Dealer/Distributor
- Manufacturer
- Engineer/Architect
- Other: _____

I would like to receive my subscription:
 By Mail
 Digitally

SWM2024

4. Please check all of the types of building or manufacturing you are involved with:

- | | | | |
|---------------------------------------|--------------------------------------|---|---|
| <input type="checkbox"/> Post Frame | <input type="checkbox"/> Residential | <input type="checkbox"/> Metal Roofing | <input type="checkbox"/> Rollforming |
| <input type="checkbox"/> Metal Frame | <input type="checkbox"/> Commercial | <input type="checkbox"/> Trusses/Columns | <input type="checkbox"/> Trim & Flashings |
| <input type="checkbox"/> Fabric | <input type="checkbox"/> Equine | <input type="checkbox"/> Foundations | <input type="checkbox"/> Insulation/ |
| <input type="checkbox"/> Agricultural | <input type="checkbox"/> Roofing | <input type="checkbox"/> Gutters/Snow Retention | <input type="checkbox"/> Moisture Control |



MAIL TO:
 Shield Wall Media
 ATTN: Barb Prill
 PO Box 255, Iola, WI 54945

Grain Bin Gazebo

GMLS INDUSTRIES (GOLDEN GRAIN) CREATIVE BACKYARDS

CREATIVEBACKYARDS.COM

SPECS:

SIZES: 9' to 45' dia.

STRUCTURE: Steel with fabricated steel posts positioned approximately every 9' around the perimeter

FOUNDATION: Concrete pad with 5/8" wedge anchors to anchor the posts

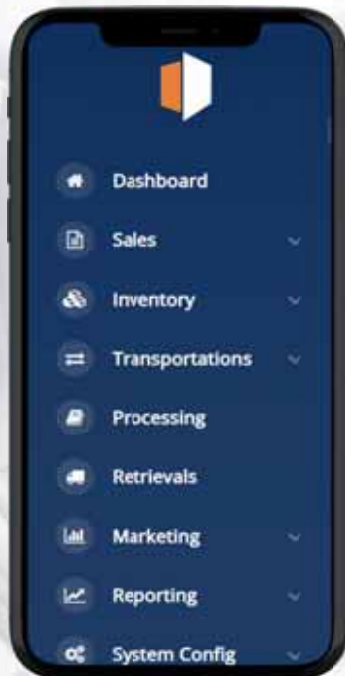


The grain bin gazebo is an emerging market and is a great way for clients to add a touch of country to a backyard. The gazebos offer a plethora of uses: backyard retreat, BBQ shack, info booth, wedding venue, event centers, and more. They can be left entirely open around the bottom or have a ring installed around the bottom. An entire side can also be closed off if additional protection from the wind is needed. The Golden Grain kits are specifically designed to be used as gazebos. (Retrofitting a standard grain bin as a gazebo isn't recommended, as grain bins are designed to get their strength from using all the panels). They feature a bin panel with a trapezoidal design to provide superior strength to withstand higher winds.



DEALER MANAGEMENT SYSTEM

A BETTER WAY TO MANAGE YOUR BUSINESS



SCHEDULE A DEMO
(877) 315-5444 | dms@rtonational.com
POWERED BY RTO NATIONAL

Garden Shed

BORKHOLDER BUILDINGS AND SUPPLY

BORKHOLDER.COM

SPECS:

BUILDER: H&D Quality Builders, Inc.
(hdqualitybuilders.com)

SIZE: 15'6"x32'x10'

ROOF PITCH: 6

DOOR: Plyco, series 92

FASTENERS: Atlas, 1-1/2"

FOUNDATION: Perma-Columns, 5"x6"

POSTS: Borkholder Buildings, 5"x6"

ROOF PANELS: McElroy Metals and
Sunsky, Max Rib II

TRUSSES: Borkholder Buildings

WALL PANELS:
McElroy Metals and Sunsky

WINDOWS: Silverline



This garden shed was built for the homeowner for her to have a place to keep her plants for the winter and still get lots of sunlight. Illinois' long, cold winters make this shed a great solution for her location.









OUR ROLL-UP DOORS ARE STRONG, SMOOTH AND QUIET



SCAN TO LEARN MORE



-  GREAT SPRINGS.
-  EXCELLENT WIND RATINGS.
-  EASY TO INSTALL.
-  FAST LEAD TIMES.



Trac·Rite®

800-448-8979

tracrite.com • tr@tracrite.com



PERFORMANCE • VALUE • SERVICE

Farmhouse Shed

BACKYARD AND BEYOND

SPECS:

ROOF TRUSSES: 2"x4", 16" on center

FLOOR JOISTS: 2"x4", 16" on center with 3/4" tongue-and-groove flooring

WALLS: 2"x4", 16" on center with 7/16 LP board & batten siding with SilverTech barrier

OPTIONS: Two 2'x3' shed windows, two transoms windows, 72" double door, 1' eave overhang with ornamental brace

ROOF PITCH: 9/12

METAL: Laurel County Metals

DOORS: Backyard and Beyond

FASTENERS: IndFas Supply, ring shank 3" framing nails

ROOF PANELS: Mac Metal, 29ga Type 1 metal

TRUSSES: Backyard and Beyond

VENTILATION: MIDCO, 8"x16" vents

WINDOWS: MIDCO, 2'x3' shed windows



We built this new-to-us cottage design for our customers to enjoy modern aesthetics without compromising space and quality. "The Farmhouse" will allow our customers to use their shed in an HOA to match the popular farmhouse home build. We want to produce portable outdoor solutions that customers not only use but also enjoy.



TELL 100,000 SUBSCRIBERS ABOUT YOUR NEW PRODUCT

If your company has developed a new product for builders or contractors, email a new product announcement to one of the contacts listed below for possible publication in our business-to-business magazines.

Include a clear, high resolution image of the product (no logos or advertisements), along with a brief description of your product and the problems it solves.

Submission is not a guarantee of publication. We reserve the right to edit all submissions for content, length, and clarity.



Metal Roofing Magazine; Roofing Elements Magazine; Rollforming Magazine:
Karen Knapstein – karen@shieldwallmedia.com • 715-513-6767

Rural Builder; Frame Building News; Garage, Shed & Carport Builder:
Dan Brownell – dan@shieldwallmedia.com • 920-264-0787

GET GUARANTEED PLACEMENT BY ADVERTISING: Gary Reichert – gary@shieldwallmedia.com • 715-252-6360

NEW PRODUCTS

S-51 Unwells New Clamp for Riverlock Profiles

S-51, the inventor of engineered, manufactured, metal roof attachments, introduced its new S-5-RC™ clamp for attaching a wide range of rooftop accessories to the Riverlock™ metal roof profile. The two-piece design of the S-5-RC interfaces with the rib geometry and creates a mechanical interlock strong enough to mount most rooftop applications with certified holding strength, protecting the roof from corrosion and preserving the metal panels' thermal cycling characteristics. Applicable for small- and large-scale industrial, commercial and institutional projects, the clamp can be installed anywhere along the seam for placement flexibility. Installers can utilize the S-5-RC with rails or pair the clamp with the S-51 PVKIT™ solar solution for streamlined rail-less and penetration-free solar mounting to save time and money. Made of high-tensile structural aluminum to match Riverlock's long-lasting performance, the S-5-RC requires no maintenance or reinspection and is warranted for the life of the roof.

New Stanley's Control-Lock™ Tape Measures

Stanley has released the new Control-Lock tape measures that feature an integrated finger brake, providing users with maximum control and protection when extending and retracting the blade. Coming in lengths of 12, 16, 25, 26, and 30 feet, they're made to reach out to 12 feet. Features listed:

- An integrated finger brake that provides improved control of the blade when measuring and retracting

Malco Products Expands Line of C-RHEX Drivers

Malco Products, SBC, one of the nation's leading solution developers and manufacturers of a variety of high-quality tools for the building trades, today launched an extension of its line of award-winning, Cleasable, Reversible Magnetic Hex Drivers: the Building Construction Series, which features deeper sockets for installing fasteners with higher head heights such as concrete anchors, pole barn screws and other common fasteners for roofing, siding and gutter applications. The C-RHEX Building Construction Series models are available in six lengths from 2" through 12". Reversible 1/4" and between sizes, and the Building Construction Series drivers are designed to work effectively with painted fasteners, as well as specialized polishes in the internal sockets prevents fastener sticking. End-users can save valuable time and effort by having access to two reversible hex sizes in one driver with color-coded grooves for easy identification. These drivers are built with S2 hardened steel

Bosch: New Cordless Rotary Hammer Has Corded Power

Bosch has released a new cordless rotary hammer that it says has the power of a corded tool. The concrete rotary hammer is called the Proxactar 18V SDS-max 1-5/8" Rotary Hammer (GBH18V-40C) and outperforms its corded counterpart, the Bosch 11264EVS, according to Bosch. Features listed:

- Cordless Design: Delivers corded hammer performance (EPTA) powered by a 4.0 Ah lithium-ion battery pack.
- KickBack Control: Reduces the risk of sudden tool reactions in binding conditions.
- Soft Start and Controlled RPM: Adjusts the tool rpm and bpm for more controlled drilling and chiseling applications when working with softer materials like brick and tile.
- Anti-Vibration System: Helps to reduce tool vibration due to the longer air cushion built into the hammer tube and dampers added in the handle.
- Lock-On/Lock-Off Button: Keeps the tool running when locked on (hammer mode only) and helps prevent accidental activation of the tool trigger when locked off.

Garage

EXPRESS BARN

[HTTPS://EXPRESSBARN.COM](https://expressbarns.com)

SPECS:

BUILDER:

Prism Builds (prismbuilds.com)

METAL: Midwest Metals

DOORS: Amarr, Lincoln 3000

INSULATION: NOFP, SolexLT
Reflective Insulation

POSTS: Midwest Columns LLC

ROOF PANELS: Midwest Metals

TRUSSES: Parker Truss

WALL PANELS: Midwest Metals

WINDOWS: Gerkin

ADDITIONAL DETAILS:

- Cupola by Sheet Metal Designs
- Schlage Lock Set
- Entry Doors by Mid-Am Building Supply, Inc.
- On Center LVLs by Blue Linx
- Cramer Engineering, LLC
- Marco Industries Closures
- Big Ass Fans



This structure embodies the adaptability of post-frame building, catering to a myriad of needs within its sturdy confines. It promises a space where hobbies flourish, possessions find shelter, and relaxation reigns supreme. Whether tinkering with tools, embarking on adventures, or unwinding in solitude, this post-frame building serves as a well-built backdrop for a well-lived life.

SHOWTIME

THE \$50
PRE-REGISTRATION
FEE FOR ADMISSION
COVERS BOTH
DAYS AS WELL AS
THE EDUCATIONAL
SEMINARS.

Punch Your TicketS to our next EVENTS!

FROM THE
PUBLISHER
OF FRAME
BUILDING
NEWS



2024
**POST-FRAME
BUILDER** SHOW

JUNE 19-20, 2024
Branson Convention Center, Branson, MO
postframebuildershow.com

ADMIT 1

FROM THE
PUBLISHER OF
ROLLFORMING
MAGAZINE



2024
Rollforming
Construction
Show

SEPTEMBER 18-19, 2024
DeVos Place, Grand Rapids, MI
constructionrollformingshow.com

ADMIT 1

FROM THE
PUBLISHER
OF GARAGE,
SHED &
CARPORT
MAGAZINE



2025
**GARAGE • SHED • CARPORT
BUILDER
SHOW**

JANUARY 15-16, 2025
Greenville Convention Center, Greenville, SC
garageshedcarportshow.com

ADMIT 1

For More Information Contact Missy Beyer:
missy@shieldwallmedia.com ▪ PH 920-216-3007

Shop

JUSTIN AND VAL WESTDYK

SPECS:

DOORS: Three RELIABILT steel primed prehung single front door insulating core

FASTENERS: Atlas

HSC1CC #10x1" wood screws, charcoal
HSC15PW #10x1.5" wood screws, pure white
HSC1GY #10x1" wood screws, light gray
HSCDECK3 #8x3" exterior deck screw with square head
HSCPAN1 #10x1" pancake head wood screw

FOUNDATION: 6" concrete slab with 3' wide x 3' deep concrete-filled holes under each post.

POST BRACKETS: Best Buy Metals

INSULATION: Infinity Shield, Double Bubble Insulation Foil, white

LIGHTS: Four 12" UFO disk lights

ROOF PANELS: Best Buy Metals, Tuff-Rib, various lengths, 29ga

VENTILATION: Open ridge vent

WALL PANELS: Best Buy Metals, Tuff-Rib, various lengths, 29ga

WINDOWS: Two RELIABILT 150 Series new construction 35-1/2"x47-1/2"x3-1/4" jamb white vinyl low-e argon single hung windows

LUMBER & TRUSSES: Best Buy Metal trusses

TRG30 30' METAL GABLE: (4:12), 10' or 12' OC, 6"x6" posts

TRL12 12' METAL LEAN-TO TRUSS: (1:12), 10' or 12' OC, 6"x6" posts



Justin and Val Westdyk built this shop in the winter of 2022-2023 with the help of some scaffolding on wheels and a jig they built on top to hold one side of the truss while they hoisted the other side. Val currently works out of the enclosed portion of the lean-to. The structure is 30'x60', 14' tall on the sides, and about 18' in the middle, with a 12' lean-to. It's the perfect space for their many hobbies.



Get Free Business Exposure Here!

We publish a Project of the Month in each edition of our magazines to promote best design and building practices. We have received feedback from readers that it's one of their favorite features in our magazines.

If you're a builder or shed manufacturer, you can receive **FREE NATIONAL EXPOSURE** for your business (free PR!) by sending building details, a component list, and a brief description. The component list should identify manufacturers and models so we can give them proper credit, too!

The general description can include details about what the customer wanted, special elements, any other features that make it noteworthy.

These editorial placements are absolutely free!

WHAT WE NEED:

- Component List
- Brief Description
- Three to five attractive high resolution images (at least one must be the entire building).



Submission is not a guarantee of publication. We reserve the right to edit content.

If you have any questions about the Project of the Month, contact the editor:

Dan Brownell • dan@shieldwallmedia.com • 920-264-0787

TO SUBMIT ONLINE: shieldwallmedia.com/submissions

Treehouse

TRACKROCK BUILDERS

[FACEBOOK.COM/TRACKROCKBUILDERS](https://www.facebook.com/trackrockbuilders)

SPECS:

METAL: Best Buy Metals

FASTENERS: Atlas, Long Life
#10x1.5" Wood Screws, Black

ROOF PANELS: Best Buy Metals,
Galvalume Finish Tuff-Rib

TRUSSES: Best Buy Metals, Custom
lean-to trusses

WALL PANELS: Best Buy Metals,
Black Finish Tuff-Rib

ADDITIONAL DETAILS:
Standard and custom crafted trim 18"
overhangs

POST SIZE: 6"x6"



This isn't your typical kid's treehouse! The numerous windows in this two-story post-frame luxury getaway in Murphy, North Carolina, feature a spectacular view of the surrounding forest and mountains. The structure blends into its surroundings, while the interior sports a glamorous design and all the amenities a treehouse resident could ever want, including a kitchen, bathroom with shower, master bedroom, den, spiral staircase, wood floors, and porch.





Pool House Shed

BLUNIER BUILDERS

BLUNIERBUILDERS.COM

SPECS:

SIZE: 960 sq. ft.

ROOF PITCH: 4:12

METAL: McElroy

DOORS: Raynor, insulated overhead door, Aspen 138 9'x7'

AJ PATIO SLIDING DOOR: 6'x6'8"

WINDOW: 24"x32" AJ Harmony vinyl framed double hung window

PORCH: 6'x32'x8' with 12" header

FASTENERS: SFS

FOUNDATION:
Blunier Builders, 24'x32'

INSULATION: Mansfield, Batt

POSTS: Blunier Builders, 2"x6"

ROOF PANELS: McElroy

ROOF PANELS: McElroy, 26ga

SPECIAL INTERIOR FEATURES:
Golf Simulator

TRUSSES: CIT

WINDOWS:
AJ Manufacturing, 5'x7' + 2'x2'8"

ROOF COLOR: Matte Black

SIDING COLOR: Regal White





This pool house shed in Washington, Illinois, features a porch, overhangs, insulated overhead door, patio sliding door, and indoor golf simulator.

Double Solar Carport

SOLAR CARPORTS DIRECT

SOLARCARPORTSDIRECT.COM

SPECS:

Two 45 solar panel, 27.9 KW carports

SOLAR INSTALLER: Advance Power Redding (apredding.net)

ROOF PITCH: 10 degrees

SOLAR PANELS: 90ea Mission 310W solar panels (missionsolar.com)

MICROINVERTER: 90ea Enphase IQ7plus microinverter (<https://enphase.com>)

SOLAR ATTACHMENTS: S-5-SCD custom clamp (s-5.com)

FOUNDATION: Anchor bolts with rebar cage foundation



During the pandemic, anesthesiologist Dr. Diane B. Gill opened her home to traveling medical personnel who needed a place to stay while treating patients suffering from COVID-19 in Chico, California, and the surrounding communities. The residence features two 45-panel, 27.9 KW residential double carports on site to supplement the power required to run the 4,896 sq. ft. home and its amenities. Solar Carports Direct, based in Cottonwood, California, installed the carport system using S-5! clamps to secure the solar panels to the carport structures. S-5! provided Solar Carports Direct with a unique, innovative custom mounting solution, specifically designed, engineered, and tested for their carport systems.



Woodworking Shop/Office

GRABER POST BUILDINGS

GRABERPOST.COM

SPECS:

ROOF: Graber Post Buildings,
29ga G-Rib, Copper

METAL: Graber Post Buildings,
29ga G-Rib, Copper

POSTS: Graber Post Buildings,
3-ply 2"x6" Nail-Lam

TRUSSES: Graber Post Buildings,
24' 4/12 Wood Truss

WALLS: Graber Post Buildings,
26ga. Board and Batten, Clay

WINDOWS: Pella 250 Series,
36"x48" Vinyl Double Hung

DOORS: Two 36" Plyco Fiberglass
9-Lite Door, Series 20
Therma-Tru Double Patio Inswing Door

FASTENERS: ST Fastening Systems

ADDITIONAL:

Overhead Door, C.H.I 2283 9'x8'
Graber Post Buildings gutters
and downspouts with LeafGuard
Graber Post Buildings Copper
Snowblock Retention



This 24'x24' structure is neatly tucked away on a property that sits right next to the waters of Painted Hills Lake near Martinsville, Indiana. The building serves as a woodworking shop/remote office. Mr. Meyers visited Graber Post Buildings in Montgomery, Indiana, with a vision of creating a building with a smaller footprint that will still allow him to complete the hobbies he enjoys as well provide an office to get out of the home on remote work days. He was able to that and more with this 1,128 sq. ft. building. He was also able to add this custom deck out the front to take in the views of the beautiful lake.





Post Frame Manufacturer & Supplier

Get all of your supplies on one delivery!

Dealer/Installer Of:



METAL ROOFING & SIDING PANELS, TRIMS & COMPONENTS, LAMINATED COLUMNS, ENGINEERED WOOD TRUSSES, C.H.I. OVERHEAD DOORS, WINDOWS, ENTRY DOORS, COMPLETE PACKAGE DELIVERY, AND MUCH MORE!



7716 N. 900 E.
Montgomery, IN 47558

| Get in Touch

www.graberpost.com

Garage/Hobby Shop

STEEL STRUCTURES AMERICA

STEELSTRUCTURESAMERICA.COM

SPECS:

SIZE: 30'x40'x16'

ROOF PITCH: 6:12

METAL: RSP

WAINSCOT: RSP

OVERHEAD DOOR CANOPY:

Steel Structures America

DRIVE-THROUGH DOORS:

Hormann Modern Tech, 18'x4' black satin steel, 14'x10' black satin steel

MAN DOOR: CODEL

TRUSS: Timberline Truss

FASTENERS: CDA Builders Supplier, black bolts and hardware on timber truss

CEDAR WRAP POSTS:

Steel Structures America

CUPOLA WITH WEATHERVANE:

MWI Components



This is a standard gable in Valleyford, Washington, done in stylish charcoal gray. This residential pole building features primed steel overhead doors drive-through with 18'x14' and 14'x10' garage doors, two gables, two eaves, weathered copper roof, with copper penny roof corners, charcoal grey body with charcoal and weathered copper corners, 4' wainscot, 4' gable extension front and back, vented ridge, 10'x10' loft with stairs, porch over man door, two cedar-wrap posts, Perma-Columns, overhead door canopy front and back, 4"x4" timber truss front and back, black bolts and hardware on timber truss, 36" cupola with copper weathervane, 5'x5' porch cover, man door, and cedar wrap posts.



Become A Leading Voice In The Industry

Here's your opportunity for professional growth and development: Get involved in Shield Wall Media's construction magazines.

We're looking for a few new voices to write about the subjects that matter to our readers.

SWM specializes in serving its B2B audience with the information it needs to be successful.



If you have a talent for writing and would like to make a difference — and you'd like to establish yourself as a voice in the industry — we should talk!

If you can:

- Produce engaging, well-researched content tailored to our audiences
- Meet deadlines consistently while maintaining high standards of quality and originality
- Collaborate effectively with our team to develop ideas and refine content strategies

Contact us today at
editorial@shieldwallmedia.com

Custom Garage

POLE BARN DIRECT

[HTTPS://POLEBARNSDIRECT.COM](https://polebarnsdirect.com)

SPECS:

SIZE: 38'x72'x14' with 10'-wide wrap-around lean-to porch (18' on gable, 50' on eave)

DOORS: 9-lite man door; 12'x12' CHI overhead garage doors, model #5216 in mahogany; 9'9"x10' sliding door

POSTS: Richland Column 3-ply laminated posts

ROOFING: Premier Metal 29ga Legacy Panel, black

WALLS: Premier Metal 29ga Weather X, charcoal

TRUSSES: 7/12 attic trusses manufactured by Dutchcraft Truss & Component

INSULATION: Single bubble vapor barrier, interior wall and ceiling insulation

WINDOWS: Alside 3'x4' single-hung windows with grids, 3'x3' and 6'x2' fixed transom windows with grids

OTHER: 36" MWI glass cupolas with weathervanes, 30" grade guards, 3' stone wainscot by Rock Solid Cut Stone & Supply on front and under lean-to, Premier Metal ceiling and wall interior liner panel, cedar-wrapped posts and ceiling liner under lean-to



This structure is a custom garage with workout area, as well as vehicle and boat storage. The attic space includes a game/recreation area, additional storage, and wrestling practice space.





Storage Shed

RAM BUILDINGS

RAMBUILDINGS.COM

SPECS:

SIZE: 24'x40'x17' main section with 12'x40' enclosed lean-to and 12'x40' lean-to porch

ROOF PITCH: 4:12

COLUMNS AND TRUSSES:
Littfin Truss Manufacturing

ROOF PANELS: Metal Sales 29ga
Classic Rib

FASTENERS: SFS

SIDING PANELS:
LP SmartSide 12" Board & Batten

DOORS: AJ 7100 Series Service Door, Midland 2" ThermoGuard Steel Overlay overhead door, and MWI sliding door components

WINDOWS:
Thermo-tech Classic Series

CUPOLAS: MWI 24" cupolas with weathervane



The owners of this building had a small older barn that needed to be replaced in the location of this new one. A lot of design decisions were made with the idea of having a classic barn style so as to not lose the feeling of the old barn on the property. Going with the vertical board and batten siding, cupolas, custom overlay door, and including a sliding door in the design were all selected to mimic the previous building while providing a beautiful, updated version. The 5'x5' window in the front gable of the building is a feature that allows ample light into the main section of the building.



Garage/Workshop

REMUDA BUILDING

REMUDA.CA

SPECS:

SIZE: 26'x52'x20' Workshop and 37'x60'x16' Shop

ROOF PITCH: 12/12 over the workshop and 6/12 over breezeway and shop

METAL: Forma Steel

DOORS: OH - Equal doors, TX450 with black aluminum full-view poly panels - 14'x14', 10'x10', 8'x8'

FASTENERS: Forma Steel

FOUNDATION: Perma-Column, 8400 Series

INSULATION: Johns Mansville, R28

POSTS: Hilliar Posts, 2"x8" 4-ply

ROOF PANELS: Forma Steel, FC 26 29 ga

SPECIAL INTERIOR FEATURES: Automatic roll doors on either side of breezeway, 4'x9'

TRUSSES: Structural truss, engineered wood

WALL PANELS: Forma Steel, FC 36 29ga

WINDOWS: All Weather

ADDITIONAL DETAILS: Fir gable details, 2"x8"
Fir corbels, 4"x4"
Shed dormer, fir beams, 8"x8"



This post-frame building comprises a two-bay garage linked by a breezeway, housing a lower-level art studio and hobby area, while the upper-level loft boasts offices and a gaming zone. Initially, the client approached Remuda with an old Quonset building that required demolition, expressing a desire for an upgraded space. Although uncertain about specifics, they knew they needed additional room for hobbies, contemplating either renovating their existing home or erecting new structures. Ultimately, the family collaborated with Remuda to construct three distinct buildings: a customized 4,900 sq. ft. garage and hobby workshop, a custom 1,440 sq. ft. barn, and a 252 sq. ft. shed.

Storage Shed

SUPERIOR SHEDS LLC

MYSUPERIORSHEDS.COM

SPECS:

SIZE: 10'x12' Econo

ROOF PITCH: 6/12

METAL: Upstate Metal

DOORS: Janus, 6'x7' Roll up

SPECIAL INTERIOR FEATURES:

LP Prostruct floors

Aluminum diamond plate door threshold

TRUSSES: Superior Sheds LLC



We set out to create an economical building option that had the same quality as our other portable buildings, and we did it. We use the same floor systems that are in all of our buildings but were able to find ways to cut some costs to build at a lower price while still maintaining our quality.



DMI = BUILDING INVESTMENT PROTECTION



Let DMI complete your building project with Code Approved & Warrantied:

HHW & PANGAKE FASTENERS • ANCHORS • PIPE FLASHINGS
REFLECTIVE INSULATION • POLYCARBONATE PANELS
SOLID & VENTED FOAM CLOSURES

www.directmetalsinc.com 855-800-8878

SteelGrip SAMP, Inc.
Preventing Injuries and Saving Lives®



SAMP MATS:
Easy to use magnetic grip provides safer footing when working on steel roofing. Get maintenance jobs done faster and easier.

231-944-0109
SteelGripSamm.com

PROTECTION YOU CAN COUNT ON!



SSG Classic Snow Stoppers
Made of all stainless steel products.

RMG Premium Snow Stopper
Made out of 14-gauge stainless steel.

Contact us and we can give you all the details!
717-209-0418

WE WELCOME WHOLESALERS!

WE ADD THE VALUE TO THE METAL



MARION MANUFACTURING

- Automation Systems
- Metal Construction Rollformers
- Coil Processing
- Forming & Fabrication
- Recondition Existing Machines

620-382-3751
www.marionmanufacturing.com

UNITED STEEL SUPPLY



STEEL PRODUCTS FOR THE METAL ROOFING & METAL BUILDING INDUSTRY

Understanding Superior Service

512-263-0954 • unitedsteelsupply.com

-Column Repair-



ANTHEM BUILT

- Installers Wanted
- High Profit Potential
- Exclusive Products
- Training & Support

www.anthembuilt.com
309.463.2777

Manufacturers of Shed Type, Residential, and Medium Duty Commercial Garage Doors



KEYMAR MFG.

Arthur, IL 61911
sales@keymar.net
217.543.2828

RED DOT PRODUCTS

COIL SALES

We source coils direct from the mill for **better quality and pricing.**

833-473-3368
Fax: (717) 740-6644
465 N Reading Rd, Ephrata, PA 17522
RedDotProducts.com

HOURS:
Monday - Friday: 7 AM - 5 PM
Saturday: By Appointment
Sunday: Closed

CUSTOM WIDTHS & LENGTHS





THE MOST AFFORDABLE, ALL-IN-ONE SOLUTION FOR IN-GROUND POST DECAY AND UPLIFT RESTRAINT

P (610) 377-3270
www.planetsaverind.com

Made in the USA



MASTER FLASH®
ROOFING • PLUMBING • ELECTRICAL • HV/AC • SOLAR

From the smallest to the LARGEST, the most complete line available.

Pipe Range: Fits: 1/8" to 39-1/2" Pipes
Base Range: 2-1/4" to 44" (1 meter)

1-800-WASHER 5 (927-4375) • Ph: 858-513-4350 • info@aztecwasher.com • www.aztecwasher.com

Everlast Roofing, Inc.
OUR NAME SAYS IT ALL

PROFILE OPTIONS

EVERLAST II™ EVERDRAIN™

WHY EVERLAST?
AZM™ with Activate Technology
Synergy® Paint System
Cut Edge Corrosion Inhibitor™ (CECI™)
Heat Forming
Most corrosion resistant panel in the industry

Lebanon, PA 10 Enterprise Court Lebanon, PA 17042	Howe, IN 7180 N 050 E Howe, IN 46746	Bridgton, ME 24 JR Mains Drive Bridgton, ME 04009	Orwell, OH 161 Grand Valley Ave Orwell, OH 44076
---	--	---	--

FOR MORE INFORMATION CALL: 888.339.0059 OR VISIT US AT WWW.EVERLASTROOFING.COM

HEAVY-DUTY ANCHOR BRACKETS

Sturdi-Wall™ drill set model
Sturdi-Wall™ Plus wet set model
ICC-E5 certified code compliance
permacolumn.com

PERMA COLUMN.

BUILD BETTER. BUILD STRONGER. BUILD TO LAST.

Golden Rule FASTENERS

**QUALITY PRODUCTS
COMPETITIVE PRICES
& MOST ORDERS SHIP THE SAME DAY**

- Screws • Closures • Ridge Vent
- Pipe Flashings • Butyl Tape • And much more!

Ph: (334) 283-4030 - FAX (334) 283-4032
info@goldenrulefastenersinc.com - www.goldenrulefastenersinc.com

rFOIL®
Reflective Insulation

THE BEST WAY TO INSULATE METAL ROOFING

CLASS 1/A Fire Rating

**888-887-3645
www.rFOIL.com**

Manufactured by: **COVERTECH**

PREMIUM QUALITY ROLLFORMING MACHINERY

ASC MACHINE TOOLS, INC.
MADE IN THE USA • EST. 1949

PANEL LINES	CZ PURLIN LINES
TRIM LINES	CHANNEL LINES
SLITTING LINES	ROLL UP DOOR LINES

WWW.ASCMT.COM TEL: (509) 534-6600

MANUFACTURER OF ROLL FORMING EQUIPMENT

Acu-Form
ROLL FORMING EQUIPMENT

- Coil Upenders • Shears • Slit Line • Uncoilers • Trim Roll Formers
- Wrappers • Panel Lines

Millersburg, Ohio
(330) 674-4003 - ACUFORMEQUIPMENT.COM

WRAP THEIR BUILDING UP WITH WARMTH! **NEW!!!**



FAST • EASY • LOW COST

Retrofit Clip

www.retrofitclip.com • retrofitclip@hotmail.com
1-800-431-9661 • Manitoba, Canada

Check Out Our Digital Magazine Websites

www.ruralbuildermagazine.com
www.framebuildingnews.com
www.readmetalroofing.com
www.rollformingmagazine.com
www.garageshedcarportbuilder.com
www.roofingelementsmagazine.com

1ST ANNUAL POST-FRAME BUILDER SHOW

June 19-20, 2024

Branson Convention Center, Branson, MO

FOR MORE INFORMATION CONTACT MISSY BEYER:
missy@shieldwallmedia.com • 920-216-3007

DID YOU KNOW?

It costs less to buy a Business Card ad than it does to have cards printed.

We even give your "cards" to more than 40,000 potential customers.



FOR MORE INFO CONTACT GARY REICHERT:
gary@shieldwallmedia.com • 715-252-6360










Download Your Copy Of The Shield Wall Media Business Directory 2024 at

www.shieldwallmedia.com/directory



To get your company into the 2025 Directory, use our online form or contact:

Gary Reichert • 715-252-6360
gary@shieldwallmedia.com

Whatever They Need

Apple Outdoor Supply is All About Delivering to Their Customers.

BY LINDA SCHMID

In 1997, William Gula and a small group of investors began a distributorship delivering fasteners to construction companies. They called it Apple Outdoor Supply. As time went on, they noticed further opportunities in accessories for sheds.

Early Challenges

The immediate challenges that the company faced were finding the products prospective customers needed as well as sourcing manufacturers to make their patented products. Their earliest patents were offset hinges for sheds and chicken

coop windows that were needed when their shed-making customers dove into the chicken coop business.

Distribution Focused

With a focus on distribution and delivering what the customer needs, Apple doesn't like to pigeonhole themselves, Tom Waymouth, General Manager said. The result is they deal in components for a wide range of manufactured products. Today Apple Outdoor Supply's product lineup includes hardware and accessories for sheds, barns, and other wood structures, carports, and metal structures, along with outdoor furniture and playsets.

The company serves the whole United States from two branches, Pennsylvania and North Carolina. They have regional routes and drop shipping for destinations beyond the reach of their routes.

Product Lineup

The product lineup evolves organically; a customer tells them what they need, and they source or produce it. But they also go looking for the niches that aren't filled. If people can't seem to find the exact bolt they need, Apple will source it. When they can't find what a customer needs, Apple makes it. When the codes change in the industry, they develop new products to meet and exceed the new codes. In the last year they just released a new 6-lite door complete with Craftsman style core for sheds.

Constantly innovating, the team looks for better solutions for the industry. Re-



Tom Waymouth, General Manager



Mike Thomas, Warehouse Lead

search and development are outsourced, so the company can keep their focus on customers.

Recent Challenges

Not only must product lines evolve with the times, so too must processes. Waymouth said they just upgraded their 20-year-old computer system. Naturally, that takes some time to navigate between transitioning data, learning new software, and optimizing the system to maintain and enhance their service.

In House

Waymouth said that the company has a family culture, fostering behaviors that promote courtesy, kindness, helpfulness, and customer service. They are a family

of 31 people now, and Waymouth said they are proud of the team they have built over the years. He added that they have been fortunate to pick up some great people in the last year to fill positions in delivery, warehousing, and management...positions across the board.

Waymouth believes that success in finding the right people is in part because they are financially stable and able to offer good benefits, but it also has a lot to do with culture.

“We have had people leave, then return because they like the people and the work environment here,” he said.

The team has worked on improving customer service, communications both internally and externally, and getting the right products to the customer when they



Brian Pitts, Purchasing Manager

need them. To this end, they have expanded delivery routes and they “touch” more people locally than ever before.

Lessons Learned

“I’ve learned to expect the unexpected,” Waymouth said. “For example: COVID. That unexpected challenge turned the business world upside down. You had to be nimble and just do what you could.”

If you expect the unexpected, contingency plans are in order. You can’t plan for everything, but if you have some decent contingency plans in place, you may be able to adapt one for whatever challenge pops up.

Some of Waymouth’s best advice for newcomers: “Learn, learn, learn. There are so many products in the industry, and your customers have a wealth of knowledge, which they will be happy to share if you ask them,” he added.

Looking Ahead

Markets continue to evolve. Currently there are many changes in the steel structure industry, including new aesthetics, such as transoms, on tiny houses and barns. There is a lot of opportunity, and the Apple team intends to do their part by innovating products, helping their customers grow, and in the process growing themselves,” Waymouth said, “It is an exciting time to be part of the industry.” **GSCB**



Steel Trusses

Reinventing Mid-Sized Constructions
with Strength and Flexibility

BY SCOTT STEELE



The Best Buy Metals team begins the process of setting up their booth at the 2024 Garage, Shed & Carport Show in Knoxville.

Above: The steel trusses made the Best Buy Metals booth quick and easy to put together.

The world of mid-sized post frame construction projects, from multi-car garages to spacious workshops, is witnessing a surge in the use of angle iron steel trusses. These prefab steel marvels are changing the game for builders and contractors, offering a compelling alternative to traditional wooden beams. This article dives into the myriad advantages of steel trusses, highlighting their economic and structural perks that are winning over pros in the construction industry. Brian Tomlinson, with TMW Construction, said, “They make it a whole lot easier and cheaper than putting up regular wood trusses.”

Unveiling the Power of Steel: Strength and Durability

At the heart of the steel truss revolution lies its unmatched strength. Compared to similar-sized wooden beams, steel trusses can handle significantly heavier loads. This means wider spans and more open floor plans, perfect for versatile buildings like workshops and garages. Steel trusses give builders the freedom to create expansive, column-free interiors, maximizing space usability.



The first post is set into a post bracket.



Steel trusses are immune to rot and insect damage that can shorten the lifespan of wood trusses.



Steel trusses require fewer posts, trusses, and concrete, which reduces material and labor costs.



Steel trusses are also much more resistant to warping, fire, and heat damage than wood trusses.

Embracing Open Floor Plans: Clear Span Capabilities

One standout feature of steel trusses is their ability to achieve clear spans effortlessly. Unlike wooden beams that require support posts at regular intervals, steel trusses eliminate this need. This results in spacious interiors devoid of obstructive columns, offering designers greater flexibility and efficient use of space. Picture a multi-car garage with room to spare or a workshop without pesky posts hindering movement. For example, angle iron steel trusses spanning 10 to 12', besides a more open layout, also mean that steel truss buildings install much quicker than lumber trussed buildings, since contractors are installing considerably fewer posts and fewer trusses, which decreases the labor



Steel trusses can span a much further distance than wood trusses, allowing for more usable, support-free space.

hours with their costs. Less labor hours on one project equals additional productivity time and, in return, more revenue.

Minimal Maintenance: A Long-Term Advantage

Steel trusses are inherently resistant to the elements. To boost this resilience against rust and corrosion, many quality trusses

will have a coating to encapsulate the metal underneath. This translates to significantly reduced maintenance compared to wooden beams, which are prone to rot, warping, and insect damage. Builders can rely on steel truss structures to stand the test of time with minimal upkeep, slashing long-term costs and ensuring structural integrity.

Enhanced Fire Safety: A Crucial Consideration

Fire safety is paramount in any construction project, and angle iron steel trusses excel in this regard. They offer superior fire resistance compared to wood, able to withstand intense heat for prolonged periods. This extra time can be critical for evacuation in case of fire, making steel trusses an attractive choice for safety-conscious builders.

Dimensional Stability: Assuring Structural Integrity

Unlike wood, which can warp and crack over time, steel trusses maintain exceptional dimensional stability. They're less susceptible to bending or warping, ensuring the building stays sturdy and retains its shape for years to come. This stability is crucial for builders aiming to construct durable and reliable buildings. This obviously plays into the quality of the finished construction. Most homeowners expect to pay higher prices



Prefab steel trusses are manufactured to precise specifications, ensuring a smooth assembly process compared to wood trusses.



Although a steel truss is more expensive than a wood truss, it can take the place of five or six wood trusses, which saves money.

for superior products, and because it's a niche market skill set, there will likely be less competition for projects. Considering that materials and labor will likely be reduced for the contractor, the quotes to homeowners can actually be more than traditional timber truss based construction. This combination makes steel trusses very attractive.

Sustainable Solutions: A Focus on the Future

The steel industry is making strides in sustainability, with many manufacturers using recycled steel content in their products. While steel trusses may have a higher upfront carbon footprint than wood, their longer lifespan and potential for future recycling contribute to a more sustainable building lifecycle.

Ease and Efficiency: Streamlining the Construction Process

Prefab steel trusses are manufactured to precise specifications, ensuring a smooth assembly process compared to traditional wooden beams. This results in reduced construction times and labor costs, allowing builders to finish projects faster and potentially boost profits. Owner/contractor Macon Hill of TrackRock Builders, LLC had this to say, "Steel trusses offer several advantages over timber trusses. They are easier to work with...lightweight and consistent properties...installation faster and more efficient...steel trusses provide greater strength and durability, ensuring a longer lifespan and reducing the need for maintenance. As someone who has been using steel trusses in my business for the past four years, I can confidently recom-



The Best Buy Metals booth nears completion after just a few hours. Steel trusses made this project practical for a temporary structure.

mend them for their reliability and overall performance."

To put it another way, Andrew Milsaps with Lefevers Construction Company said, "Quick Install. Happy customer."

Beyond the Advantages: Addressing Considerations

While steel trusses offer compelling benefits, it's important to consider certain factors. As with any construction project, cost is very important, as well as any specialized equipment that may be needed for installation of trusses due to their weight. However, the long-term advantages often outweigh these considerations, making steel trusses a wise investment for mid-sized construction projects. Esther Libbey with Best Buy Metals (Knoxville, Tennessee location) said, "Most of my customers tell me that these steel truss buildings are actually less expensive than lumber trussed buildings. This is because even though each individual truss is more expensive than a wooden truss, they can span an area that would require five to six lumber trusses. Lumber trusses are usually installed at 2' centers, while angle iron steel trusses are strong enough to span 10' to 12'. With the decrease in truss quantity, fewer posts, fewer post bases, and less concrete to hold those posts are also needed, so the building is often less expensive."

Scott Steele is a digital marketing specialist at Best Buy Metals (bestbuymetalroof.com). For builders and contractors looking to harness the benefits of steel trusses, reputable suppliers like Best Buy Metals (bestbuymetalroofing.com) and American Pole Barns (americanpolebarns.com) offer a wide range of prefab options alongside metal roofing and siding. GSCB

Resources

- Best Buy Metals www.bestbuymetalroofing.com
- American Pole Barns www.americanpolebarns.com



For more titles, check out Shield Wall Media online: www.shieldwallmedia.com

GET MORE INFORMATION ABOUT PRODUCTS & SERVICES SEEN IN THIS ISSUE. HERE'S HOW:



If you are looking for more information from companies featured in this issue, fill out this form.

Mail the completed form to us, and we will have those companies get in touch with you. There's no need to fill out multiple forms; we'll do the legwork for you.

Name (please print) _____

Signature (required) _____

Company _____

Address _____

City _____ State _____ Zip _____

Telephone (_____) _____

E-mail _____ Date _____

Please check one or more boxes to subscribe FREE/Renew for 3 years:

- Garage, Shed & Carport Builder Magazine*
 Frame Building News
 Metal Roofing Magazine
 Rural Builder
 Rollforming Magazine
 Roofing Elements Magazine
 Metal Builder

I would like to receive my subscription: By Mail Digitally

Check this box if you wish to receive our Construction Express newsletter and offers from our partners.

Email address is required to receive newsletter.

CONTACT NAME & EMAIL (OR) NAME & PHONE NUMBER ARE REQUIRED. WITHOUT THIS INFORMATION WE WILL NOT PROCESS THE REQUEST.

CHECK WHICH TITLE APPLIES TO YOU:

- President
 Owner
 Partner
 General Manager
 Sales Manager/Rep
 Engineer/Architect
 Vice President
 Foreman
 Installer
 Other _____

PLEASE CHECK THE PRIMARY CATEGORY THAT DESCRIBES YOUR BUSINESS:

- Builder, Dealer, Remodeler or Installer
 Roofing Contractor
 Metal Roofing Contractor
 Building Material Dealer/Distributor
 General Contractor/Remodeler
 Manufacturer/Rep of Manufacturer
 Architect/Specifier
 Construction Consultant/Engineer
 Building Owner/Developer
 Other (Please Specify) _____

ENGAGED IN THE FOLLOWING APPLICATIONS:

- Gutters/Accessories
 Institutional
 Residential
 Agricultural
 Commercial
 Industrial

SELECT A MAXIMUM OF 5 COMPANIES TO REQUEST INFORMATION FROM:

Company Name: _____ PAGE: _____

Company Name: _____ PAGE: _____

Company Name: _____ PAGE: _____

Company Name: _____ PAGE: _____

Company Name: _____ PAGE: _____

I understand that by providing the above information I hereby consent to receive communication regarding my subscription via US Mail, telephone, and e-mail sent by *Garage, Shed & Carport Builder Magazine*.

GSCB APR/MAY 2024



Residential Gross Sales and Profitability Predicted to Increase

We are currently wrapping up the CSI — Annual & Market Report. We are running a little behind; new projects always do, but look for the report to land, free of charge, in your mail box late May or early June.

2024 is looking to be a good year. Single family residential and multi-family residential both predict gross sales going up. Single family is most applicable and, in that group, 42% predict an increase in gross sales over 2023.

The projections for profitability mirror the projections for gross sales, with 40.7% predicting increased profitability.

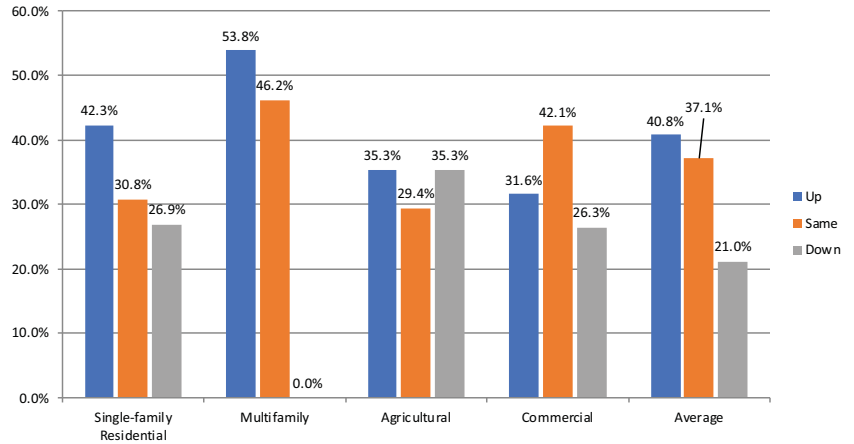
In context, this continued increase in profitability shows an ongoing strong market. The positive outlook is following a strong year in 2023 and is encouraging in the face of ongoing inflation and increasing interest rates.

Look for a more detailed look in the CSI — Annual and Market Report mailing to you in Q2. [GSCB](#)

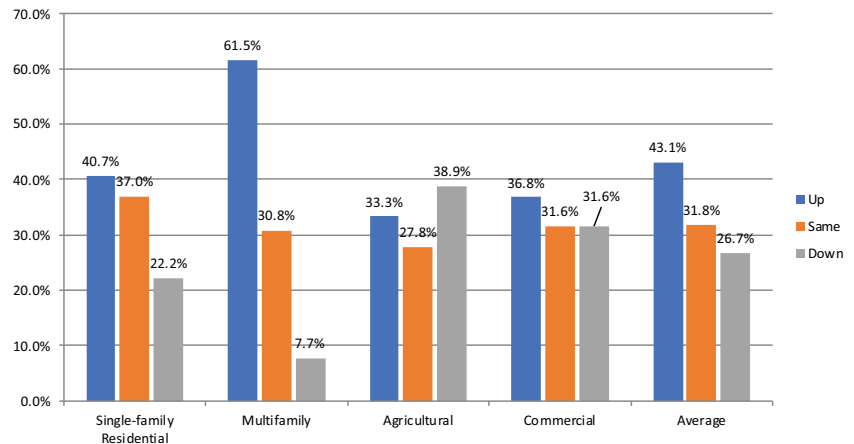
If you like the CSI columns or find the information useful, help us help you. Shield Wall media sends a State of the Industry Survey in fall and a mid-year State of the Industry Survey in Spring.

Please complete the survey and share it with your colleagues. A larger survey sample generates more reliable information.

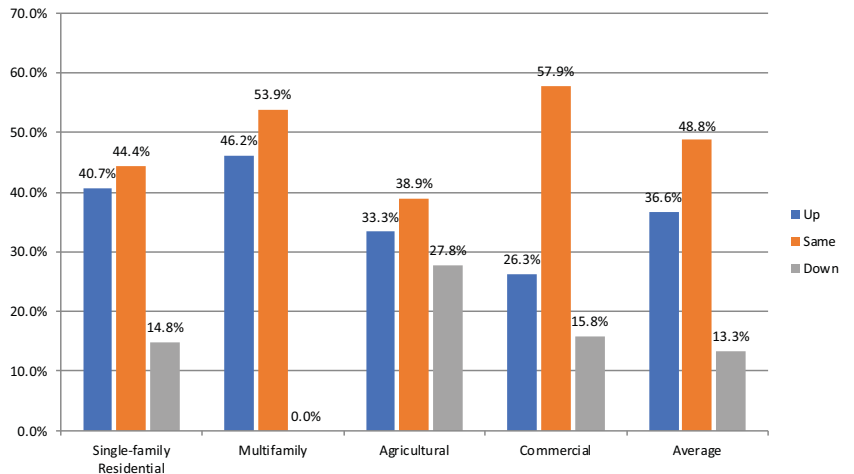
Projected Gross Sales 2024 Compared to 2023 by Market Segment



Projected Profitability for 2024 Compared to 2023 by Market Segment



2023 Profitability Compared to 2022 by Market Segment





ASTAAMERICA®

BY JANUS INTERNATIONAL

MARRIAGE ISN'T ALWAYS ABOUT COMPROMISE



WITH ASTA'S WIDE VARIETY OF OPTIONS, YOU CAN BOTH GET WHAT YOU WANT.

Variety is the spice of life, and with **ASTA America's** extensive selection of models, sizes, and paint color options, you and your spouse can get the doors you want without settling. Our versatile and durable sheet doors come included with spiral torque tubes, tension holding devices, and adjustment available in the bracket systems. They're a quick and easy install, whether you do it yourself or have one of our skilled dealers do it for you.

ASTA America is a win-win. See, marriage is easy.



ASTAAmerica.com

For more information on ASTA AMERICA and
our Doors, scan or call **888-850-1843**.

