



Custom Nameplates



1-540-283-9193

Fax 1-540-283-9194

sales@identigrow.com

identigrow.com

Your customers will remember your name!

identiGrow

phone: 1-540-283-9193

fax: 1-540-283-9194

email: sales@identigrow.com

website: identigrow.com

mail: IdentiGrow

PO Box 50

Port Republic, VA 24471



Jon



Wendell

For more than 20 years, IdentiGrow has supplied businesses like yours with nameplates so that every item you manufacture includes your name.

With dozens of options available, Jon or Wendell will help you choose a design that reflects the personality of your business.

Call today! You can soon have your nameplates in hand, ready to be applied to your products.



Formerly the
nameplate
division of



Not responsible for typographical errors.

Index

Consecutive Numbering Info	3
Decals	16
Key Fobs	19
Nameplates	
3-D Plastic	10-15
Bike Plates	4
Die Struck	6-7
Etched Metal Plates	16
Full-Color Sublimated	4
Large Stock/License Plate	15
Laser-engraved	8-9
Metal	4-8
Plastic	8-15
Screen-printed	5
Order Form	17

How Long Will My Plates Last?

In recent years, long-lasting plates have become more important to our customers.

After extensive research, we have concluded that the perfect plate does not exist, but rather, each customer must choose from the options that best meet their objectives.

Here are a few helpful hints:

- Black ink always outlasts other colors.
- Sublimated plates have the longest guarantee of any plate we offer.
- Bike plates have a superior UV coating.
- Our screen printed ink is one of the best in the industry since we changed types in 2017.
- 3-D Plates will be legible long after all inks have faded because the imprint is raised. We also recommend an optional UV coating on these plates to increase longevity and abrasion resistance.
- The sun is a major contributor to fading. If possible, place the nameplate out of direct sunlight.

You will find other helpful notes in the product descriptions. We continue to research other practical ways to increase the life of our plates. Stay tuned!

Jon Lee

Use Nameplates on...

Mini Barns	Chicken Coops	Birdhouses	Arbors
Gazebos	Furniture	Carports	Trellises
Garages	Cabinets	Fencing	Stoves
Pole Barns	Playgrounds	Decks	Clocks
Dog Houses	Garage Doors	Sheds	Gates



Use Nameplates for...

- Identity
- Information
- Authenticity
- Advertising
- Ownership

Consecutive Serial Numbering

What can Consecutive Numbering do for you?

Consecutive numbering enables you to quickly and knowledgeably answer questions when someone calls...

...about stock on an unattended sales lot.
 ...about a past purchase that needs matching paint, a replacement window, or other repair.

...about an item on rental property or something that came as part of a home purchase.

...about an item that a neighbor or friend bought from you.

No more guessing about the item; no more wasted time as the caller tries to give you a detailed description. Simply ask for the serial number, then pull up accurate information!

Prices for consecutive numbering are listed with each type of nameplate.



email: sales@identigrow.com website: identigrow.com

October 2021

phone: 540-283-9193

Full Color Aluminum Plate

A DURABLE Full Color plate with a UV coating with an above average life expectancy, probably in the 6-8 year range.

Full color imprint allows you to show your color logos. A big advantage for multiple colors since there is no additional charge for multiple colors or additional setup charges.

Lower average turn around time.



Rectangles

Preliminary Pricing

Add per plate

Item #	Size (sq. in.) ¹	Setup ²	25	50	75	125	250	500	1000	Flat Adhesive ³
FC01	1 - 1.9	\$60	2.28	1.48	1.22	1.00	.84	.76	.72	.12
FC02	2 - 2.9	\$60	2.41	1.61	1.34	1.13	.97	.89	.85	.14
FC03	3 - 3.9	\$60	2.53	1.73	1.46	1.25	1.09	1.01	.97	.16
FC04	4 - 6.9	\$60	2.89	2.09	1.82	1.61	1.45	1.37	1.33	.26
FC07	7 - 9.9	\$60	3.23	2.43	2.16	1.95	1.79	1.71	1.67	.44
FC10	10 - 14.9	\$60	3.82	3.02	2.75	2.54	2.38	2.30	2.26	.60
FC15	15 - 19.9	\$60	4.42	3.62	3.35	3.14	2.98	2.90	2.86	.80
FC20	20 - 24.9	\$60	5.06	4.26	3.99	3.78	3.62	3.54	3.50	1.06

Metal Colors - White

Other colors may be available upon request, but price may vary slightly.

Imprint Colors

Full Color imprint!

Additional Options

Any Quantity

2 Holes	.15
4 Holes	.29
Round Corners	.26

Consecutive Serial Numbering

Choose one of these type sizes: 1/8" or 1/4".

25	50	75	125	250	500
1.11	.71	.58	.47	.39	.35

¹ To determine total square inches of plate, multiply width by height.

² One-time setup charge – waived on future orders if an identical plate is reordered within three years.

³ Price is for flat adhesive suitable for smooth surfaces, 3M MP467. For other options, please call us.

Bike Plates

This embossed metal plate stands out! It comes in one standard size (2 7/8" x 6") with 2 holes included in the base price. Free color matching is available. Stated longevity of ink is two years, but we have customers who say the plates last well for many years.



Screen Printed 'Bike' Plates

Item #	Size	Setup ²	250	500	1000	2500	5000
BP	2 7/8" x 6"	\$60	2.35	1.58	1.22	.98	.90

Prices above include one plate color and one imprint color, chosen from the colors shown. Actual colors may vary.

Each Additional Imprint Color

Setup	250	500	1000	2500	5000
\$60	.29	.18	.13	.09	.07

Additional Options

Any Quantity

4 Holes	.15
---------	-----



Full Color Sublimated Plates

5-year No-Fade Guarantee (unheard of in this industry)

A glossy, UV-resistant finish on this plate protects your image and makes it shine! With the 5-year no-fade guarantee, your plate should look nice for many years.



Exterior Sublimated Plates

Item #	Size (sq. in.) ¹	Setup ²	125	250	500	1000	2500	Add per plate Foam Adhesive ³
SUB01	1 - 3.9	\$60	2.31	1.71	1.56	1.49	1.44	.61
SUB04	4 - 6.9	\$60	3.08	2.49	2.34	2.26	2.22	.76
SUB07	7 - 9.9	\$60	3.80	3.20	3.05	2.97	2.93	.92
SUB10	10 - 14.9	\$60	5.22	4.62	4.47	4.40	4.35	1.19
SUB15	15 - 19.9	\$60	6.52	5.93	5.78	5.70	5.66	1.44
SUB20	20 - 24.9	\$60	7.89	7.29	7.14	7.07	7.02	1.72

Additional Options For holes and/or round corners, see pricing on page 5.

¹ To determine total square inches of plate, multiply width by height.

² One-time setup charge – waived on future orders if an identical plate is reordered within three years.

³ Price is for foam adhesive suitable for slightly textured surfaces. For other options, please call us.

Screen Printed .032 Aluminum

This is our most economical metal plate and is a good option for lower quantities. Since we changed to this ink type in 2017, screen printed ink is one of our most durable inks.

As an added bonus, the nameplate color can be matched very closely with your logo color.



Rectangles

Item #	Size (sq. in.) ¹	Setup ²	125	250	500	1000	2500	Add per plate	
								Gold Metal	Foam Adhesive ³
SP01	1 - 3.9	\$60	1.72	1.12	.97	.90	.85	.15	.61
SP04	4 - 6.9	\$60	1.94	1.34	1.19	1.11	1.07	.29	.76
SP07	7 - 9.9	\$60	2.17	1.57	1.42	1.35	1.30	.44	.92
SP10	10 - 14.9	\$60	2.62	2.02	1.87	1.80	1.75	.69	1.19
SP15	15 - 19.9	\$60	2.91	2.32	2.17	2.09	2.05	.91	1.44
SP20	20 - 24.9	\$60	3.25	2.66	2.51	2.43	2.39	1.16	1.72

Metal Colors

The prices above are for silver aluminum, however, the following metal colors are also available. Please call us for pricing.

Black Yellow Blue Red Light Green Brushed Gold
 White Orange Purple Dark Red Dark Green

Imprint Colors

Choose any color you want for your plate! The prices above include one color. To add more colors to your plate, see the price chart below.

Each Additional Imprint Color

Setup	125	250	500	1000	2500
\$60	.71	.65	.62	.60	.60

Additional Options

	Any Quantity
2 Holes	.15
4 Holes	.29
Round Corners	.26

Consecutive Serial Numbering

Choose one of these type sizes: 1/8" or 1/4".

125	250	500	1000	2500
.62	.52	.47	.44	.43

¹ To determine total square inches of plate, multiply width by height.

² One-time setup charge – waived on future orders if an identical plate is reordered within three years.

³ Price is for foam adhesive suitable for slightly textured surfaces. For other options, please call us.

Die Struck .050 Aluminum

This classy plate has an engraved or etched appearance so your information will remain even if a customer paints over it. While the ink on a die struck plate is less durable than the screen printed ink, the special outdoor lacquer gives added protection, making it a very attractive plate.



Rectangles

Item #	Size (sq. in.) ¹	Setup ²	125	250	500	1000	2500	Add per plate	
								Gold Metal	Foam Adhesive ³
DS01	1 - 3.9	\$60	2.01	1.42	1.27	1.19	1.15	.15	.61
DS04	4 - 6.9	\$60	2.35	1.76	1.61	1.53	1.49	.29	.76
DS07	7 - 9.9	\$60	2.66	2.07	1.92	1.84	1.78	.44	.92
DS10	10 - 14.9	\$60	3.11	2.52	2.37	2.29	2.25	.69	1.19
DS15	15 - 19.9	\$60	3.46	2.86	2.71	2.63	2.59	.91	1.44
DS20	20 - 24.9	\$60	3.75	3.15	3.00	2.93	2.88	1.16	1.72

Imprint Colors

Prices above include one imprint color, chosen from these options. To add more imprint colors to your plate, see the price chart below.

Black Red Yellow Dark Blue Royal Blue Dark Green Dark Brown
 White Maroon Purple Medium Blue Orange Kelly Green

Each Additional Imprint Color

Setup	125	250	500	1000	2500
\$60	.71	.65	.62	.60	.60

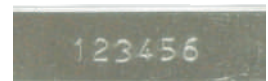
Additional Options

Any Quantity

2 Holes	.15
4 Holes	.29
Round Corners	.26

Numbering samples:

1/8"



Consecutive Serial Numbering

Choose one of these type sizes: 1/8" or 1/4".

125	250	500	1000	2500	5000
.62	.52	.47	.44	.43	.42

1/4"



Die Struck .050 Aluminum

Rectangles with Round Corners



Rectangles - Stock Sizes

Item #	Size	Setup ¹	125	250	500	1000	2500	5000	Add per plate Foam Adhesive ²
ID21 Silver	1" x 2"	\$60	1.66	1.11	.96	.88	.84	.82	.58
ID21 Gold	1" x 2"	\$60	1.75	1.20	1.05	.97	.93	.91	.58
ID31 Silver	1" x 3"	\$60	1.91	1.35	1.20	1.13	1.08	1.07	.58
ID31 Gold	1" x 3"	\$60	2.02	1.46	1.31	1.24	1.19	1.18	.58
ID375 Silver	3/4" x 3"	\$60	2.28	1.73	1.58	1.50	1.46	1.44	.58
ID375 Gold	3/4" x 3"	\$60	2.39	1.83	1.68	1.61	1.56	1.55	.58

Ovals



Ovals - Stock Sizes

Item #	Size	Setup ¹	125	250	500	1000	2500	5000	Add per plate Foam Adhesive ²
ID1316 Silver	1" x 1 ¹³ / ₁₆ "	\$60	1.81	1.26	1.11	1.04	.99	.98	.58
ID1316 Gold	1" x 1 ¹³ / ₁₆ "	\$60	1.89	1.34	1.19	1.11	1.07	1.05	.58
ID2518 Silver	1" ³ / ₈ " x 2 ¹ / ₂ "	\$60	2.39	1.83	1.68	1.61	1.56	1.55	.58
ID2518 Gold	1" ³ / ₈ " x 2 ¹ / ₂ "	\$60	2.57	1.97	1.82	1.75	1.70	1.69	.58
ID235 Silver	2" x 3 ¹ / ₂ "	\$60	4.37	3.77	3.62	3.55	3.50	3.49	.87
ID235 Gold	2" x 3 ¹ / ₂ "	\$60	5.24	4.21	4.06	3.98	3.94	3.92	.87

Imprint Colors

See page 6 for color choices and pricing for more than one ink color.

Additional Options

To add 2 holes to your plate, see pricing on page 6.

Consecutive Serial Numbering

See page 6 for information.

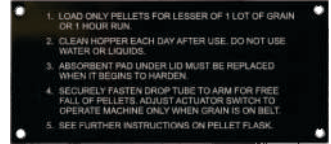
¹ One-time setup charge – waived on future orders if an identical plate is reordered within three years.

² Price is for foam adhesive suitable for slightly textured surfaces. For other options, please call us.

Laser-Engraved Stock Plates – Metal or Plastic

For low quantities, choose one of these options. Prices include 2 free holes, and consecutive numbering is available for both metal and plastic plates.

Metal Stock Plates

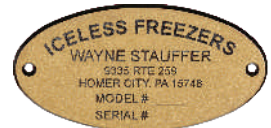


This black-coated aluminum plate engraves to silver. It's proved to be an excellent performer!

Metal

Item #	Size	Setup ¹	25	50	75	125	250	500
CB1316	1" x 1 3/16" Oval	\$60	2.79	1.99	1.73	1.51	1.35	1.27
CB2518	1 3/8" x 2 1/2" Oval	\$60	3.38	2.58	2.32	2.10	1.94	1.86
CB21	1" x 2" Round Corners	\$60	2.67	1.87	1.60	1.39	1.23	1.15
CB31	1" x 3" Round Corners	\$60	2.93	2.13	1.87	1.65	1.49	1.41
CB375	3/4" x 3" Round Corners	\$60	3.37	2.57	2.30	2.09	1.93	1.85
CB04	2" x 3 3/8" Rectangle	\$60	3.38	2.58	2.32	2.10	1.94	1.86
CB07	2 1/4" x 4" Rectangle	\$60	4.02	3.22	2.95	2.74	2.58	2.50

Plastic Stock Plates



Choose from matte gold, brushed silver or white plastic with black engraving.

Plastic

Item #	Size	Setup ¹	25	50	75	125	250	500
LSL	2" x 5" Rectangle	\$60	3.49	2.69	2.42	2.21	2.05	1.97
LSM	1 1/4" x 3" Rectangle	\$60	3.27	2.47	2.21	1.99	1.83	1.75
LSO	2" x 4" Oval	\$60	3.46	2.66	2.39	2.18	2.02	1.94

Consecutive Serial Numbering

For numbers up to 1/4" in height.

25	50	75	125	250	500
1.11	.71	.58	.47	.39	.35

¹ One-time setup charge – waived on future orders if an identical plate is reordered within three years.

Coated Black .040 Aluminum

A DURABLE plate and an excellent option for lower quantities or larger plates. Life expectancy is above average, probably in the 10 year range.

The pricing is for Black plates, but other colors may be available by special request.

Lower average turn around time.



Rectangles

Add per plate

Item #	Size (sq. in.) ¹	Setup ²	25	50	75	125	250	500	Flat Adhesive ³
CB01	1 - 1.9	\$60	2.31	1.51	1.24	.99	.75	.63	.12
CB02	2 - 2.9	\$60	2.44	1.64	1.44	1.12	.88	.76	.14
CB03	3 - 3.9	\$60	2.56	1.76	1.56	1.24	1.00	.88	.16
CB04	4 - 6.9	\$60	2.88	2.23	1.93	1.61	1.37	1.25	.26
CB07	7 - 9.9	\$60	3.87	2.75	2.35	2.03	1.79	1.67	.44
CB10	10 - 14.9	\$60	4.60	3.40	3.00	2.68	2.44	2.32	.60
CB15	15 - 19.9	\$60	5.25	4.05	3.65	3.33	3.09	2.97	.80
CB20	20 - 24.9	\$60	5.76	4.56	4.16	3.84	3.60	3.48	1.06

Metal Colors - Black

Available in Black. Other colors may be available upon request, but price may be slightly higher.

Imprint Colors

Engraves to silver aluminum

Additional Options

Any Quantity

2 Holes	.15
4 Holes	.29
Round Corners	.26

Consecutive Serial Numbering

Choose one of these type sizes: 1/8" or 1/4".

25	50	75	125	250	500
1.11	.71	.58	.47	.39	.35

¹ To determine total square inches of plate, multiply width by height.

² One-time setup charge – waived on future orders if an identical plate is reordered within three years.

³ Price is for flat adhesive suitable for smooth surfaces, 3M MP467. For other options, please call us.

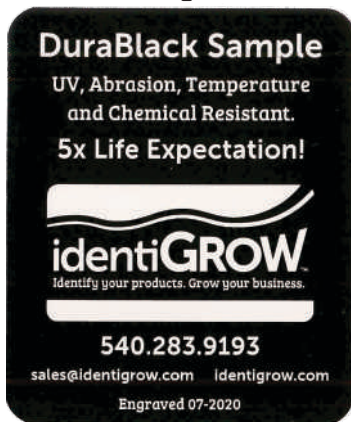
DuraBlack .020 Aluminum

This is our **MOST DURABLE** plate and is a good option for lower quantities. Life expectancy from 15-30 years, and may be much longer. It is a standard for government ID plates because of its superior resistance to fading, abrasion, temperature and chemicals.

Lab tests as follows:

- Outdoor exposure - 5000 hrs accelerated UV testing - equal to 7-10 yrs outdoor exposure
NO VISIBLE CHANGE
- Abrasion resistance - 4000 cycles on a Taber Abraser - Slight dulling of surface
- Temperature - 700 degrees for one hour - Slight yellowing of background
- Chemical - 96 hrs in many MIL-STD-810G fluids - Slight breakdown of black coating

Request a Sample



Rectangles

Add per plate

Item #	Size (sq. in.) ¹	Setup ²	25	50	75	125	250	500	Flat Adhesive ³
DB01	1 - 1.9	\$60	2.53	1.73	1.46	1.25	1.09	1.01	.12
DB02	2 - 2.9	\$60	2.89	2.09	1.82	1.61	1.45	1.37	.14
DB03	3 - 3.9	\$60	3.24	2.44	2.18	1.96	1.80	1.72	.16
DB04	4 - 6.9	\$60	4.22	3.42	3.15	2.94	2.78	2.70	.26
DB07	7 - 9.9	\$60	5.35	4.55	4.28	4.07	3.91	3.83	.44
DB10	10 - 14.9	\$60	7.12	5.23	4.97	4.75	4.59	4.51	.60
DB15	15 - 19.9	\$60	8.89	8.09	7.82	7.61	7.45	7.37	.80
DB20	20 - 24.9	\$60	10.32	9.50	9.23	9.02	8.86	8.78	1.06

Metal Colors - Black only

DuraBlack is currently available in Black only.

Imprint Colors

Engraves to a nice white.

Additional Options

Any Quantity

2 Holes	.15
4 Holes	.29
Round Corners	.26

Consecutive Serial Numbering

Choose one of these type sizes: 1/8" or 1/4".

25	50	75	125	250	500
1.11	.71	.58	.47	.39	.35

¹ To determine total square inches of plate, multiply width by height.

² One-time setup charge – waived on future orders if an identical plate is reordered within three years.

³ Price is for flat adhesive suitable for smooth surfaces, 3M MP467. For other options, please call us.

Laser-Engraved Custom-Designed Plastic

Custom-shaped design, with quantities as low as 25! Engraved from exterior plastic, we have had no complaints about these plates fading or deteriorating in any way.

For sizes not listed below, ask for custom quote. The standard thickness is 1/16"; however, 1/8" plastic is also available, as mentioned under "Additional Options".



Lasered 1/16" Plastic

Item #	Size (sq. in.) ¹	Setup ²	25	50	75	125	250	500	Flat Adhesive ³
LC01	Up to 1.9 sq in	\$60	2.16	1.36	1.09	.88	.72	.64	Add 20%
LC02	Up to 2.9 sq in	\$60	2.45	1.65	1.39	1.17	1.01	.93	Add 20%
LC03	Up to 3.9 sq in	\$60	2.75	1.95	1.68	1.47	1.31	1.23	Add 20%
LC04	Up to 6.9 sq in	\$60	3.63	2.83	2.56	2.35	2.19	2.11	Add 20%
LC07	Up to 9.9 sq in	\$60	4.50	3.70	3.43	3.22	3.06	2.98	Add 20%
LC10	Up to 14.9 sq in	\$60	5.97	5.17	4.90	4.69	4.53	4.45	Add 20%

Popular Plastic/Engraving Colors

Popular color choices: (plastic color/color it engraves to)

Black/White Brushed Silver/Black
 White/Black Brushed Gold/Black

Dozens of additional combinations are available including plastic with a wood-grain look! Just ask!

Additional Options

Any Quantity

Holes	FREE!
1/8" plastic	Add 50%

Consecutive Serial Numbering

For numbers up to 1/4" in height.

25	50	75	125	250	500
1.11	.71	.58	.47	.39	.35

¹ To determine total square inches of plate, multiply width by height.

² One-time setup charge; – aived on future orders if an identical plate is reordered within three years.

³ Price is for flat adhesive suitable for smooth surfaces. For other options, please call us.

3-D Plastic

Overall, 3D plates have performed well. Some have faded in high-sun areas and we recommend the optional UV protection for long term satisfaction. A practical advantage of 3D plates is that the imprint is visible, long after the color fades or is painted over by the customer.

Stock 3-D Rectangles or Ovals

Any size up to 2" x 7".

Standard raised-letter plate, or reversed design (where the letters look engraved)

Looks especially sharp when used with brushed silver imprint. (see Chicken plate below)

Available in black plastic only.

Raised



Reversed



Ovals or Rectangles up to 2" x 7"

Item #	Plastic Color	Setup ¹	125	250	500	1000	2500
VN14	Black	\$95	2.16	1.44	1.14	.84	.79

Add per plate	
UV Coat	Foam Adhesive ²
.18	20%

Imprint Colors

The prices above include one imprint color, chosen from the following options. To add more imprint colors to your plate, see the price chart below.

White	Orange	Dark Green	Gray	Matte Gold
Black	Red	Light Blue	Matte Silver	Brown
Ivory	Maroon	Blue	Brushed Silver	Woodgrain-Dark
Yellow	Green	Royal Blue	Dark Chrome	Woodgrain-Oak
Yellow Gold	Bright Green	Dark Blue	Bright Chrome	

Each Additional Imprint Color

Setup	125	250	500	1000	2500
\$35	.39	.34	.29	.22	.20

Consecutive Serial Numbering

Numbers may be up to 1/4" in height.

125	250	500	1000	2500
.62	.52	.47	.44	.43

¹ One-time setup charge – waived on future orders if identical plates are reordered within three years.

² Price is for foam adhesive suitable for slightly textured surfaces. For other options, please call us.

Stock 3-D Plastic Barns



BN1 2 5/8" x 3"
BN3 3 5/8" x 4 3/16"
BN5 4 3/8" x 5"



BN2 2 7/8" x 3"
BN4 4" x 4 3/8"
BN6 4 13/16" x 5 1/4"

Available sizes are listed beside each barn. Color choices are listed below.

Barns

Item #	Size	Setup ¹	125	250	500	1000	2500	Add per plate	
								UV Coat	Foam Adhesive ²
BN1, BN2	See above	\$100	2.78	1.64	1.27	1.05	.98	.18	20%
BN3, BN4	See above	\$100	3.19	1.82	1.44	1.19	1.12	.20	20%
BN5, BN6	See above	CALL FOR QUOTE						.20	20%

Shields



This stock design is available in one standard size: 2 1/4" x 4 1/4".

Shields

Item #	Plastic Color	Setup ¹	125	250	500	1000	2500	Add per plate	
								UV Coat	Foam Adhesive ²
SHBK	Black	\$100	2.36	1.40	1.00	.80	.75	.18	20%
SHOC	White/Colored	\$100	2.77	1.73	1.35	1.12	1.06	.18	20%

Plastic Color Choices for Both Barns and Shields:

White Gray Red Yellow Dark Brown Royal Blue
 Black Ivory Maroon Forest Green Chestnut Brown Navy Blue

Imprint Color Choices

See list on page 10.

Each Additional Imprint Color

See prices on page 10.

Consecutive Serial Numbering

See prices on page 10.

"We've had a lot of calls from people who peeked over the fence and saw our name on their neighbors' new shed."
 ~ Happy Customer

¹ One-time setup charge – waived on future orders if identical plates are reordered within three years.

² Price is for foam adhesive suitable for slightly textured surfaces. For other options, please call us.

Custom Designed 3-D Black and White Plastic

On 3-D plastic plates, shape and color combine to portray the uniqueness and creativity of your business.



Black Plastic

Item #	Size (sq. in.) ¹	Setup ²	125	250	500	1000	2500	5000	Add per plate	
									UV Coat	Foam Adhesive ²
CDBK04	Up to 4.9	\$95	1.83	1.21	.99	.77	.70	CALL	.15	20%
CDBK09	5 - 9.9	\$115	2.66	1.76	1.31	1.07	1.02	CALL	.18	20%
CDBK16	10 - 16.9	\$125	2.98	1.95	1.55	1.26	1.20	CALL	.20	20%
CDBK24	17 - 24.9	\$155	3.38	2.23	1.93	1.61	1.54	CALL	.20	20%
25+ Sq. In. CALL FOR QUOTE										



White Plastic

Item #	Size (sq. in.) ¹	Setup ²	125	250	500	1000	2500	5000	Add per plate	
									UV Coat	Foam Adhesive ²
CDWH04	Up to 4.9	\$95	2.12	1.40	1.16	.89	.83	CALL	.15	20%
CDWH09	5 - 9.9	\$115	2.82	1.87	1.41	1.21	1.15	CALL	.18	20%
CDWH16	10 - 16.9	\$125	3.24	2.13	1.69	1.44	1.37	CALL	.20	20%
CDWH24	17 - 24.9	\$155	3.77	2.48	2.26	1.91	1.85	CALL	.20	20%
25+ Sq. In. CALL FOR QUOTE										

**Imprint Colors,
Additional Imprint Color Pricing,
and Additional Options:** See page 13.

Consecutive Serial Numbering

Numbers may be up to 1/4" in height.

125	250	500	1000	2500	5000
.62	.52	.47	.44	.43	.42

¹ To determine total square inches of plate, multiply width by height.

² One-time setup charge – waived on future orders if an identical plate is reordered within three years.

³ Price is for foam adhesive suitable for slightly textured surfaces. For other options, please call us.

Custom Designed 3-D Colored Plastic



Colored Plastic

Item #	Size (sq. in.) ¹	Setup ²	125	250	500	1000	2500	5000	Add per plate	
									UV Coat	Foam Adhesive ²
CDOC04	Up to 4.9	\$95	2.29	1.52	1.25	.98	.91	CALL	.15	20%
CDOC09	5 - 9.9	\$115	3.07	2.04	1.55	1.33	1.26	CALL	.18	20%
CDOC16	10 - 16.9	\$125	3.55	2.32	1.84	1.55	1.49	CALL	.20	20%
CDOC24	17 - 24.9	\$155	4.11	2.71	2.46	2.08	2.02	CALL	.20	20%

25+ Sq. In. CALL FOR QUOTE

Plastic Colors

Choose from one of these plastic colors:

- Gray
- Ivory
- Red
- Maroon
- Yellow
- Dark Brown
- Chestnut Brown
- Royal Blue
- Navy Blue
- Forest Green

Imprint Colors

Choose your imprint colors from these options. One color is included in the prices above. For more colors, see prices below.

- White
- Black
- Yellow
- Yellow/Gold
- Orange
- Red
- Maroon
- Green
- Bright Green
- Dark Green
- Light Blue
- Blue
- Royal Blue
- Dark Blue
- Dark Chrome
- Bright Chrome
- Matte Silver
- Gray
- Brushed Silver
- Matte Gold
- Ivory
- Brown
- Woodgrain-Dark
- Woodgrain-Oak

Each Additional Imprint Color

Setup	125	250	500	1000	2500	5000
\$35	.39	.34	.29	.22	.20	.19

Additional Options

Any Quantity	
Holes	FREE!

Consecutive Serial Numbering

See prices on page 12.

¹ To determine total square inches of plate, multiply width by height.

² One-time setup charge – waived on future orders if an identical plate is reordered within three years.

³ Price is for foam adhesive suitable for slightly textured surfaces. For other options, please call us.

3-D Mini Plates

Perfect for smaller sizes in either **rectangle** or **oval**; up to 1 1/2" x 2 1/2" in size. Don't miss those sales. We've negotiated the price so you can economically label those smaller items.

For a reverse imprint (with the surface of the plate raised and the letters indented), a double set-up charge applies.



Mini Plates – up to 1 1/2" x 2 1/2"

Item #	Plastic Color	Setup ¹	125	250	500	1000	2500	5000	Add per plate	
									UV Coat	Foam Adhesive ²
MPBK	Black	\$95.00	1.57	1.05	.83	.65	.61	.56	.15	.16
MPWH	White	\$95.00	2.03	1.38	1.08	.84	.78	.73	.15	.16
MPOC	Colored	\$95.00	2.19	1.50	1.18	.93	.86	.83	.15	.16

Plastic Colors

In addition to black and white, these plastic colors are available:

Gray	Dark Brown
Ivory	Chestnut Brown
Red	Royal Blue
Maroon	Navy Blue
Yellow	Forest Green

Imprint Colors

Choose your imprint colors from these options. One color is included in the prices above. For more colors, see prices below.

White	Maroon	Royal Blue	Brushed Silver
Black	Green	Dark Blue	Matte Gold
Yellow	Bright Green	Dark Chrome	Ivory
Yellow/Gold	Dark Green	Bright Chrome	Brown
Orange	Light Blue	Matte Silver	Woodgrain-Dark
Red	Blue	Gray	Woodgrain-Oak

Each Additional Imprint Color

Setup	125	250	500	1000	2500	5000
\$35	.39	.34	.29	.22	.20	.19

Additional Options

Any Quantity

Holes	FREE!
-------	-------

Consecutive Serial Numbering

Numbers may be up to 1/4" in height.

125	250	500	1000	2500	5000
.62	.52	.47	.44	.43	.42

¹ One-time setup charge – waived on future orders if an identical plate is reordered within three years.

² Price is for foam adhesive suitable for slightly textured surfaces. For other options, please call us.

Large Stock Plates – 3D Plastic

High visibility for gables, large buildings, license plates and more!

Oval (6 1/2" x 12")

Rectangle with rounded ends (6" x 12")

Rectangle (6" x 12")

Custom sizes: Call for a quote



Oval



Oval



Rectangle with rounded ends



Rectangle

License Plates / Other Large Plates

Item #	Plastic Color	Setup ¹	125	250	500	1000	2500	Add per plate	
								UV Coat	Foam Adhesive ²
LPBk	Black	\$160.00	5.61	3.84	3.12	2.77	2.70	.30	20%
LPOC	White & Color	\$160.00	7.52	5.75	5.03	4.63	4.56	.30	20%

Plastic Colors See page 14.

Imprint Colors See page 14.

Each Additional Imprint Color

Setup	125	250	500	1000	2500
\$35	.39	.34	.29	.22	.20

Consecutive Serial Numbering

Numbers may be up to 1/4" in height.

125	250	500	1000	2500	5000
.62	.52	.47	.44	.43	.42

Additional Options

Any Quantity

Holes or Slots

FREE!

¹ One-time setup charge – waived on future orders if an identical plate is reordered within three years.

² Price is for foam adhesive suitable for slightly textured surfaces. For other options, please call us.

Etched Metal Plates *New!*

The exquisite look you need for fine furniture, cabinets or other high end products. Dozens of stock shapes are available including ovals, squares, circles, hearts and more. Custom shapes are available at approximately 50% additional. Generally a thinner metal, but varies by material. Available in aluminum, stainless, copper and brass. Not all metals are recommended for outdoor use.



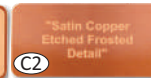
Etched Metal - Various Finishes

Available in 36 color combinations. Ask for more options.

Item #	Size	Setup ¹	250	500	750	1000	1/32" Foam Adhesive	
EM03	Up to 3 sq. in.	FREE!	3.57	2.63	2.51	2.18	.51	
EM06	Up to 6 sq. in.	FREE!	5.07	4.12	3.85	3.51	1.02	
EM09	Up to 9 sq. in.	FREE!	7.32	5.90	5.63	5.22	1.53	
EM12	Up to 12 sq. in.	FREE!	9.12	7.64	7.37	6.91	2.04	

Additional Options

Holes \$.14 ea + \$40 setup



Full Color Domed Decals *New!*

These decals are printed in full color and coated with a clear polyurethane, creating a raised dome over each decal. They're backed with permanent, pressure-sensitive adhesive. Die cutting is included in the price and decals will be furnished multiple-up on sheets. Minimum size: 1" x 1". Durable outdoors!



Domed Decals

Item #	Size	Setup ¹	125	250	500	1000	2500	5000
DD03	Up to 3 sq. in.	\$60	2.81	1.87	1.08	.87	.78	.70
DD06	Up to 6 sq. in.	\$60	3.08	2.07	1.20	1.05	.96	.85
DD10	Up to 10 sq. in.	\$60	3.21	2.16	1.33	1.20	1.08	.97
DD15	Up to 15 sq. in.	\$60	3.47	2.34	1.91	1.77	1.60	1.45
DD20	Up to 20 sq. in.	\$60	3.86	3.01	2.42	2.27	2.08	1.87

Material Colors

White Clear Chrome Brushed Chrome

¹ One-time setup charge; waived on future orders if an identical plate is reordered within three years.

Estimate and Order Form

New customers: How did you find out about us? _____

1. Contact Information

Business Name: _____

Contact Name: _____

Address: _____

City: _____ State: _____ Zip: _____

Phone: _____ Fax: _____

Email: _____

2. Sketch Your Item Here

Show approximate placement of text and draw circles for logo, graphics, holes, etc.

3. Indicate your preferences below.

Note: This part of the order blank may be partially filled in or skipped completely if you are not yet sure which plate is best for your company.

Plate construction: Metal Plastic

Item Number: _____ **Dimensions:** _____

Plate Color: _____ **Imprint Color(s):** _____

Quantity: _____ (1-2 year supply for best price)

Type Style Please choose a style that fits my business.

I am sending a style I prefer; please match it as closely as possible.

Add graphic(s) to my plate. (Circle your choice on the back of this page.)

Add ___ holes to my plate.

Include adhesive on the back of my plate.

Add consecutive numbering. Beginning number: _____

UV coating desired (availability varies by product)

Graphic Choices

Circle your selection(s).
Graphics can be mirrored and resized.



Graphic A



Graphic B



Graphic C



Graphic D



Graphic E



Graphic G



Graphic F

Add Your Logo

Add my logo to the plate.

For proper logo reproduction, send a vector file (best) or a bitmap with a minimum of 300 dpi at the desired size. More detail is a definite advantage.
Email to: sales@identigrow.com

Special Needs

Using the information that you provide, we will design several sample layouts and you may approve or make changes as desired.

We must have your signature and a 50% down payment before we can proceed with the order.

Your plates will be shipped 3-4 weeks after you sign the paperwork. If you need them sooner, ask which styles ship the fastest.

identiGROW™

Phone 540-283-9193

Fax 540-283-9194

Email sales@identigrow.com

Mail Identigrow
PO Box 50
Port Republic, VA 24471

Thank You!

Key Fobs

Crystal Key Fobs *New!*

These are designed with a clear outer shell, a 4-color process insert on two sides and a silver 1" split ring. Key fob size is listed below; imprint area is slightly smaller.



Crystal

Item #	Shape	Size	Setup ¹	250	500	1000	2500
KCR110	Rectangle	2 1/8" x 1 1/4"	\$60	1.08	.88	.70	.63
KCR308	Square	1 5/8" x 1 5/8"	\$60	1.08	.88	.70	.63
KCR318	Oval	2 3/8" x 1 3/4"	\$60	1.08	.88	.70	.63

Soft Plastic Key Fobs



Soft Plastic

Item #	Size	Setup ¹	300	500	1000	2500
KFSO	1 1/2" x 2" Oval	\$60	.89	.73	.63	.56
KFS1	1 1/2" x 2 1/2" #1	\$60	.89	.73	.63	.56

Soft Plastic Colors

White	Royal Blue
Black	Neon Orange
Red	Neon Pink
Yellow	Translucent Blue
Green	Translucent Red
Granite	Translucent Grn

Imprint Colors

Imprint for Soft Plastic Fobs may be any color you desire.

Die Struck Key Fobs

These may be combined with ID21 and ID31 (pg 7) for quantity discount when you order the same size.



Die Struck

Item #	Color	Size	Setup ¹	125	250	500	1000	2500	5000
KT21Si	Silver	1" x 2"	\$60	1.83	1.28	1.13	1.05	1.01	.99
KT21Gd	Gold	1" x 2"	\$60	1.88	1.32	1.17	1.10	1.05	1.04
KT31Si	Silver	1" x 3"	\$60	2.22	1.66	1.51	1.44	1.39	1.38
KT31Gd	Gold	1" x 3"	\$60	2.28	1.73	1.58	1.50	1.46	1.44

Consecutive Serial Numbering

Die struck key fobs can be numbered to match nameplate numbers. Call for details.

¹ One-time setup charge; waived on future orders if an identical plate is reordered within three years.

Custom Nameplates

2020

From

faceless

to



Recognized

in 3 Simple Steps

1. Contact us with basic information.

Call us, fill out the form on page 17, or complete our online form. This will help us craft the plate that fits you best.

2. Choose from the options we send you.

After you have chosen your plate and quantity, we will send you an official estimate. Sign, return and make a partial payment.

After you receive your plates, we'll send an invoice for the balance due. We bill for actual quantity. (Estimate +- 10%)

3. Apply the plates to your products.

Always ask potential customers how they found out about you. Your product is your best advertisement!



Need promo items?
Chose from hundreds of items offered at
www.hitpromo.net.
Then call us to place
your order.

identiGROW™

Making it simple to **GROW** your business!

1-540-283-9193

Call Today!

Ask for a nameplate that fits your business!